



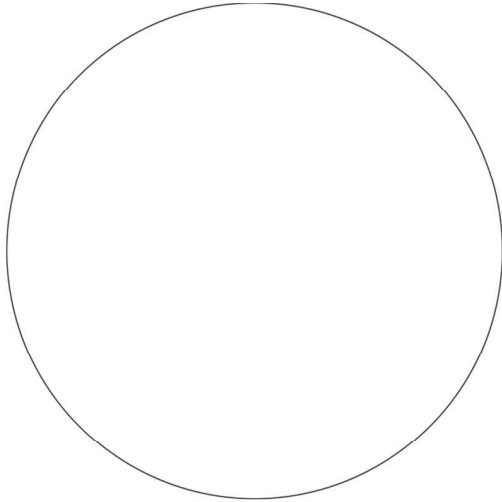
**HEILONGJIANG LONG XING**

**黑龍江龍幸太陽能技術開發有限公司**

HEILONGJIANG LONG XING SOLAR ENERGY TECHNOLOGY DEVELOPMENT CO.,LTD.

**SOLAR ENERGY  
TECHNOLOGY  
DEVELOPMENT CO.,LTD.**

中国·黑龍江·龍幸



## 龍幸会社紹介

我々黒龍江龍幸太陽能技術開発有限公司は、2004年に帰国した日本留学経験者によって創設された日中合弁の企業です。

弊社は、太陽光エネルギーやLED照明を総合的に利用する為、光学設計及び制御を含む機器の開発、製造、販売等を行う総合的なハイテク企業です。

また、省エネ環境保護事業においてサービスを提供し、省エネ環境分野の発展に寄与する新しい企業形態を目指しています。

太陽光エネルギーは、日本において「再生可能エネルギー」とされる環境を破壊しないクリーンなエネルギーであり、太陽光を利用した製品のラインアップはクリーンで安全且つランニングコストの掛からないと言う特徴を有します。

LED照明は、高効率な電源技術、放熱設計、光学設計、高度な制御技術を用いてお客様の省エネで健康快適な生活を強力にサポートします。

弊社は今後もフロンティアスピリッツを失わず、グローバルな未来を展望する企業を目指し、お客様の信頼と期待に応える存在であり続けたいと思っています。

「誠信は根源、品質は命、創意は魂」

を社訓とし、常に心と技量と経済性の調和を図りながら、みなぎる情熱と飽くなき勇気を持って一つの事業を通じ自らの人生を積極的に切り拓き、その挑戦と成功体験により自らを喚起し、世の人々に夢と感動を与える企業でありたいと考えます。

Heilongjiang Longxing Solar Energy development is the joint company China and Japan.

Our company was established by the person who has the experience which studied abroad in Japan until 2004.

We are the general high-tech firm that doing optical design, manufacture, sale about the products which used solar energy and LED, and so on.

Provides products about environmental protection and Contribute to the development of the environmental protection field are our purpose.

The solar energy is the clean energy which doesn't cause damage to the environment.

Solar energy is thought that important resources as the renewable energy.

Our product lineup is using the solar energy which has characteristic clean, safety, energy saving.

The LED illumination can provide comfortable life.

Because manufacturing LED illumination using the power technology of the high conversion efficiency, the radiation and the optical design, the advanced control technique.

We aim at the company which creates the global future with the frontier spirits. "Honesty is Roots, Quality is Life, Creativity is Soul"

This is the motto of the company.

We pioneers the life of ourselves with full of ardor and nerve. We want to be the company that can give a dream and impression to the people in the world by the experience of our challenge and the success.



# 目录

CONTENTS



## 01 太陽能系列

P1-12



## 02 LED系列

P13-23



## 03 礦物能源遠紅外加熱器

P24



## 04 無極燈系列

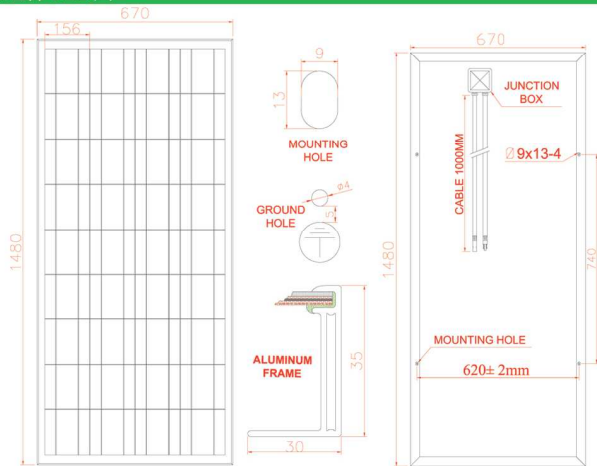
P25-28



Sun brings more energy  
More than you can imagine!!!



组件CAD图



产品实物图例



|                |          |
|----------------|----------|
| Efficiency     | %        |
| Wattage        | 18.0 V   |
| Years warranty | 10 YEARS |

Certificates



多晶硅太阳能组件 115W - 150W

| 产品型号. | CY-TP115 | CY-TP120 | CY-TP125 | CY-TP130 | CY-TP135 | CY-TP140 | CY-TP145 | CY-TP150 |
|-------|----------|----------|----------|----------|----------|----------|----------|----------|
|-------|----------|----------|----------|----------|----------|----------|----------|----------|

电气参数 (标准测试环境 1000W / m<sup>2</sup>, Temperature 25°C, Air mass 1.5)

|                          |                   |        |        |        |        |        |        |        |
|--------------------------|-------------------|--------|--------|--------|--------|--------|--------|--------|
| 最大输出功率-(P <sub>m</sub> ) | 115W              | 120W   | 125W   | 130W   | 135W   | 140W   | 145W   | 150W   |
| 功率公差范围 (±)               | 3 %               | 3 %    | 3 %    | 3 %    | 3 %    | 3 %    | 3 %    | 3 %    |
| 最佳工作电压-(V)               | 18.0V             | 18.0V  | 18.0V  | 18.0V  | 18.0V  | 18.0V  | 18.0V  | 18.0V  |
| 最佳工作电流-(A)               | 6.38A             | 6.66A  | 6.94A  | 7.22A  | 7.50A  | 7.77A  | 8.05A  | 8.33A  |
| 开路电压-(V <sub>oc</sub> )  | 21.24V            | 21.24V | 21.24V | 21.24V | 21.24V | 21.24V | 21.24V | 21.24V |
| 短路电流-(I <sub>sc</sub> )  | 6.89 A            | 7.19 A | 7.49A  | 7.79 A | 8.10 A | 8.39A  | 8.69 A | 9.00 A |
| 组件标准尺寸MM:                | 1480 x 670 x 35mm |        |        |        |        |        |        |        |

材料类型&简介

- 太阳能电池片类型: 多晶硅电池片(156X156mm)
- 组件尺寸: 1480 x 670 x 35mm
- 组件重量: 12-16kg
- 玻璃类型: 超白布纹钢化玻璃-高透型
- 边框类型: 国标铝合金边框
- 接线盒防水级别: IP 65 rated
- 连接线 /连接器: 光伏专用连接线+MC4连接器

适用温度系数

|   |             |
|---|-------------|
| Nominal Operating Cell Temperature (NOCT)   | 46°C (±2°C) |
| Temperature Coefficient of P <sub>MPP</sub> | -0.45%/°C   |
| Temperature Coefficient of V <sub>OC</sub>  | -0.35%/°C   |
| Temperature Coefficient of I <sub>sc</sub>  | 0.05%/°C    |

系统参数 (供光伏电站参考)

|                         |           |                                     |
|-------------------------|-----------|-------------------------------------|
| Operational Temperature | -40~+85°C | 5 years workmanship warranty        |
| Maximum System Voltage  | 600VDC    | 10 years warranty, 90% power output |
| Max Series Fuse Rating  | 10A       | 25 years warranty, 80% power output |

Packing information

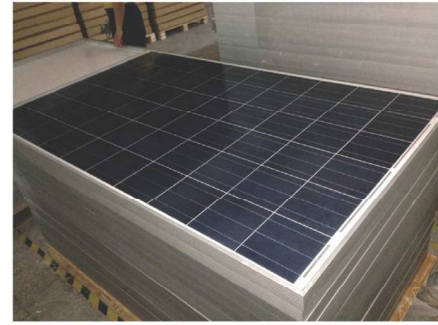
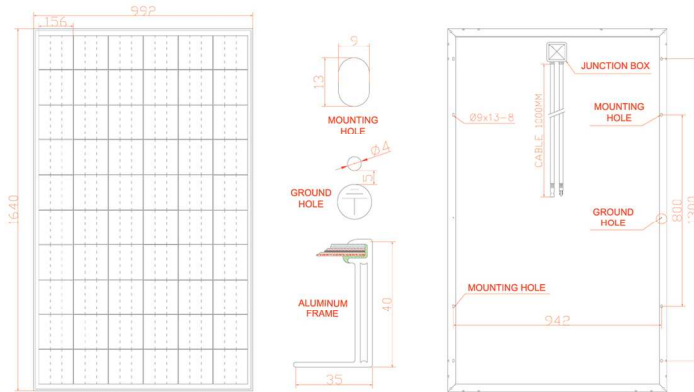






组件CAD图

产品实物图例



|                |          |
|----------------|----------|
| Efficiency     | %        |
| Wattage        | 30.0 V   |
| Years warranty | 10 YEARS |

Certificates



多晶硅太阳能组件 205W - 250W

| 产品型号  | CY-TP205          | CY-TP210 | CY-TP215 | CY-TP220 | CY-TP225 | CY-TP230 | CY-TP240 | CY-TP250 |
|---|-------------------|----------|----------|----------|----------|----------|----------|----------|
| 电气参数 (标准测试环境 1000W / m <sup>2</sup> , Temperature 25 C, Air mass 1.5) |                   |          |          |          |          |          |          |          |
| 最大输出功率-(Pm)   | 205W              | 210W     | 215W     | 220W     | 225W     | 230W     | 240W     | 250W     |
| 功率公差范围 (±)  | 3 %               | 3 %      | 3 %      | 3 %      | 3 %      | 3 %      | 3 %      | 3 %      |
| 最佳工作电压-(V)  | 30.0V             | 30.0V    | 30.0V    | 30.0V    | 30.0V    | 30.0V    | 30.0V    | 30.0V    |
| 最佳工作电流-(A)  | 6.83A             | 7.00A    | 7.16A    | 7.33A    | 7.50A    | 7.66A    | 8.00A    | 8.33A    |
| 开路电压-(Voc)  | 35.4V             | 35.40V   | 35.40V   | 35.40V   | 35.40V   | 35.40V   | 35.40V   | 35.40V   |
| 短路电流-(Isc)  | 7.38 A            | 7.56 A   | 7.73A    | 7.91 A   | 8.10 A   | 8.28A    | 8.64 A   | 9.00 A   |
| 组件标准尺寸MM:   | 1640 x 992 x 40mm |          |          |          |          |          |          |          |

材料类型&简介

- 太阳能电池片类型: 多晶硅电池片(156X156mm)
- 组件尺寸: 1640 x 992 x 40mm
- 组件重量: 22-25kg
- 玻璃类型: 超白布纹钢化玻璃-高透型
- 边框类型: 国标铝合金边框
- 接线盒防水级别: IP 65 rated
- 连接线 /连接器: 光伏专用连接线+MC4连接器

适用温度系数

|   |             |
|---|-------------|
| Nominal Operating Cell Temperature (NOCT)   | 46°C (±2°C) |
| Temperature Coefficient of P <sub>MPP</sub> | - 0.45%/°C  |
| Temperature Coefficient of V <sub>OC</sub>  | - 0.35%/°C  |
| Temperature Coefficient of I <sub>SC</sub>  | 0.05%/°C    |

系统参数 (供光伏电站参考)

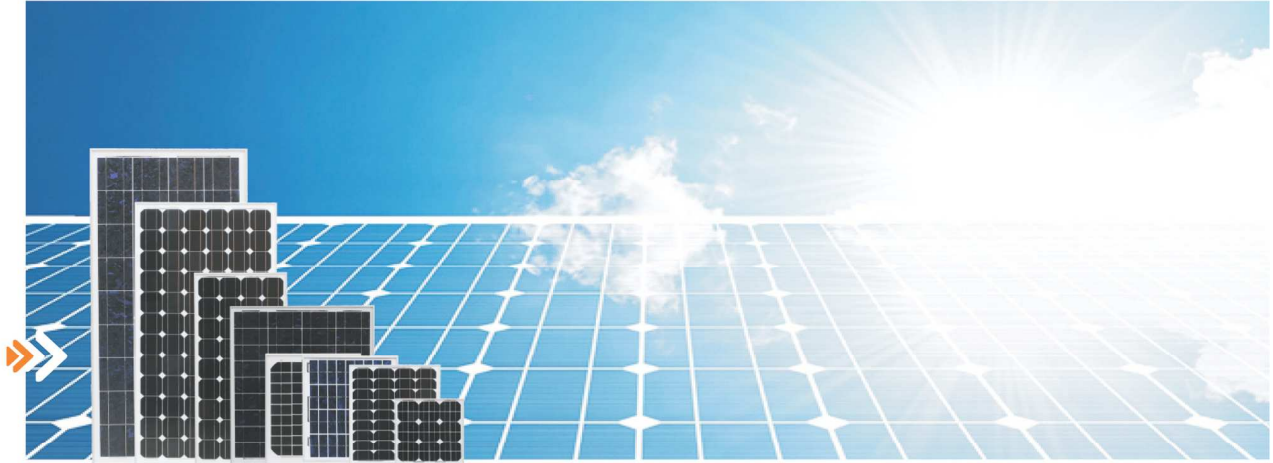
Products Warranty

|                         |           |                                     |
|-------------------------|-----------|-------------------------------------|
| Operational Temperature | -40~+85°C | 5 years workmanship warranty        |
| Maximum System Voltage  | 600VDC    | 10 years warranty, 90% power output |
| Max Series Fuse Rating  | 10A       | 25 years warranty, 80% power output |

Packing information



monocrystalline solar photovoltaic module



单晶硅太阳能模组

| 型号       | 最大功率<br>Peak Power<br>Pm(W) | 最佳工作电压<br>Maximum Power<br>Voltage Vm(V) | 最佳工作电流<br>Maximum Power<br>Current Im(A) | 开路电压<br>Open Circuit<br>Voltage (Voc)V | 短路电流<br>Short Circuit<br>Current Isc(A) | Module Dimension<br>W*L*H (mm) | 安装孔<br>纵向间距<br>A(mm) | 安装孔<br>横向间距<br>B(mm) | 安装孔<br>尺寸<br>N(mm) | Carton size<br>L*W*H(mm) | 装箱数量<br>Pcaking<br>pcs | Net weight<br>Kg/pcs | Gross weight<br>Kg |
|----------|-----------------------------|--|--|--|---|--------------------------------|----------------------|----------------------|--------------------|--------------------------|------------------------|----------------------|--------------------|
| CY-TD3   | 3                           | 9  | 0.34                                     | 10.62                                  | 0.36                                    | 180*150*18                     | 90                   | 120                  | 4-φ5x8             | 520*285*220              | 12                     | 0.5                  | 8.0                |
| CY-TD5   | 5                           | 9  | 0.56                                     | 10.62                                  | 0.61                                    | 270*150*18                     | 135                  | 120                  | 4-φ5x8             | 520*305*280              | 12                     | 0.7                  | 10.5               |
| CY-TD10  | 10                          | 18                                       | 0.34                                     | 21.24                                  | 0.36                                    | 330*290*25                     | 165                  | 265                  | 4-φ5x8             | 520*400*330              | 12                     | 1.5                  | 20.0               |
| CY-TD15  | 15                          | 18                                       | 0.84                                     | 21.24                                  | 0.91                                    | 420*350*25                     | 210                  | 320                  | 4-φ5x8             | 470*430*400              | 10                     | 2.5                  | 28.0               |
| CY-TD20  | 20                          | 18                                       | 1.12                                     | 21.24                                  | 1.22                                    | 535*350*25                     | 267.5                | 320                  | 4-φ5x8             | 600*400*420              | 6                      | 2.8                  | 19.0               |
| CY-TD25  | 25                          | 18                                       | 1.39                                     | 21.24                                  | 1.52                                    | 535*350*25                     | 267.5                | 320                  | 4-φ9x14            | 595*400*515              | 6                      | 3.5                  | 23.0               |
| CY-TD30  | 30                          | 18                                       | 1.67                                     | 21.24                                  | 1.83                                    | 535*515*30                     | 267.5                | 475                  | 4-φ9x14            | 605*400*585              | 6                      | 4.0                  | 26.0               |
| CY-TD35  | 35                          | 18                                       | 1.95                                     | 21.24                                  | 2.13                                    | 535*515*30                     | 267.5                | 475                  | 4-φ9x14            | 710*400*595              | 6                      | 4.5                  | 29.0               |
| CY-TD40  | 40                          | 18                                       | 2.23                                     | 21.24                                  | 2.45                                    | 625*535*30                     | 312.5                | 495                  | 4-φ9x14            | 710*400*595              | 6                      | 4.5                  | 29.0               |
| CY-TD50  | 50                          | 18                                       | 2.78                                     | 21.24                                  | 3.05                                    | 1000*515*30                    | 500                  | 475                  | 4-φ9x14            | 855*360*595              | 5                      | 6.5                  | 34.5               |
| CY-TD55  | 55                          | 18                                       | 3.06                                     | 21.24                                  | 3.36                                    | 1000*515*30                    | 500                  | 475                  | 4-φ9x14            | 855*360*595              | 5                      | 6.5                  | 34.5               |
| CY-TD60  | 60                          | 18                                       | 3.34                                     | 21.24                                  | 3.66                                    | 1000*515*30                    | 500                  | 475                  | 4-φ9x14            | 855*360*595              | 5                      | 6.5                  | 34.5               |
| CY-TD70  | 70                          | 18                                       | 3.89                                     | 21.24                                  | 4.27                                    | 770*670*30                     | 385                  | 630                  | 4-φ9x14            | 1250*360*600             | 5                      | 7.5                  | 40.0               |
| CY-TD75  | 75                          | 18                                       | 4.17                                     | 21.24                                  | 4.58                                    | 770*670*30                     | 385                  | 630                  | 4-φ9x14            | 1250*360*600             | 5                      | 7.5                  | 40.0               |
| CY-TD80  | 80                          | 18                                       | 4.45                                     | 21.24                                  | 4.88                                    | 1190*540*30                    | 595                  | 500                  | 4-φ9x14            | 1250*360*600             | 5                      | 7.5                  | 40.0               |
| CY-TD90  | 90                          | 18                                       | 5.00                                     | 21.24                                  | 5.50                                    | 1190*540*30                    | 595                  | 500                  | 4-φ9x14            | 1250*360*600             | 5                      | 7.5                  | 40.0               |
| CY-TD100 | 100                         | 18                                       | 5.56                                     | 21.24                                  | 6.1                                     | 1190*540*30                    | 595                  | 500                  | 4-φ9x14            | 1120*300*800             | 4                      | 12.0                 | 52.0               |
| CY-TD120 | 120                         | 18                                       | 6.67                                     | 21.24                                  | 7.33                                    | 1480*680*30                    | 740                  | 631                  | 4-φ9x14            | 1500*720*70              | 4                      | 12.0                 | 52.0               |
| CY-TD130 | 130                         | 18                                       | 7.23                                     | 21.24                                  | 7.94                                    | 1480*680*30                    | 740                  | 631                  | 4-φ9x14            | 1500*720*70              | 2                      | 12.0                 | 26.0               |
| CY-TD150 | 150                         | 18                                       | 8.33                                     | 21.24                                  | 9.17                                    | 1480*680*30                    | 740                  | 631                  | 4-φ9x14            | 1500*720*70              | 2                      | 16.0                 | 35.0               |
| CY-TD180 | 180                         | 36                                       | 5.00                                     | 42.48                                  | 5.50                                    | 1580*808*35                    | 395                  | 758                  | 8-φ9x14            | 1620*845*80              | 2                      | 16.0                 | 35.0               |
| CY-TD185 | 185                         | 36                                       | 5.14                                     | 42.48                                  | 5.65                                    | 1580*808*35                    | 395                  | 758                  | 8-φ9x14            | 1620*845*80              | 2                      | 16.0                 | 35.0               |
| CY-TD190 | 190                         | 36                                       | 5.28                                     | 42.48                                  | 5.81                                    | 1580*808*35                    | 395                  | 758                  | 8-φ9x14            | 1620*845*80              | 2                      | 22.0                 | 48.0               |
| CY-TD200 | 200                         | 36                                       | 5.56                                     | 42.48                                  | 6.11                                    | 1580*808*35                    | 395                  | 758                  | 8-φ9x14            | 1620*845*80              | 2                      | 22.0                 | 48.0               |
| CY-TD220 | 220                         | 36                                       | 6.10                                     | 42.48                                  | 6.72                                    | 1580*808*35                    | 395                  | 758                  | 8-φ9x14            | 1620*845*80              | 2                      | 22.0                 | 48.0               |
| CY-TD230 | 230                         | 30                                       | 7.66                                     | 36                                     | 8.43                                    | 1640*992*40                    | 410                  | 942                  | 8-φ9x14            | 1680*1050*90             | 2                      | 25.0                 | 55.0               |
| CY-TD240 | 240                         | 30                                       | 8.00                                     | 36                                     | 8.80                                    | 1640*992*40                    | 410                  | 942                  | 8-φ9x14            | 1680*1050*90             | 2                      | 25.0                 | 55.0               |
| CY-TD250 | 250                         | 30                                       | 8.33                                     | 36                                     | 9.16                                    | 1640*992*40                    | 410                  | 942                  | 8-φ9x14            | 1680*1050*90             | 2                      | 25.0                 | 55.0               |
| CY-TD260 | 260                         | 30                                       | 8.67                                     | 36                                     | 9.53                                    | 1640*992*40                    | 410                  | 942                  | 8-φ9x14            | 1680*1050*90             | 2                      | 25.0                 | 55.0               |
| CY-TD280 | 280                         | 36                                       | 7.78                                     | 42.48                                  | 8.55                                    | 1950*992*45                    | 390                  | 955                  | 10-φ9x14           | 2000*1050*100            | 2                      | 25.0                 | 55.0               |
| CY-TD300 | 300                         | 36                                       | 8.33                                     | 42.48                                  | 9.17                                    | 1950*992*45                    | 390                  | 955                  | 10-φ9x14           | 2000*1050*100            | 2                      | 25.0                 | 55.0               |
| CY-TD310 | 310                         | 36                                       | 8.61                                     | 42.48                                  | 9.47                                    | 1950*992*45                    | 390                  | 955                  | 10-φ9x14           | 2000*1050*100            | 2                      | 25.0                 | 55.0               |
| CY-TD320 | 320                         | 36                                       | 8.89                                     | 42.48                                  | 9.78                                    | 1950*992*45                    | 390                  | 955                  | 10-φ9x14           | 2000*1050*100            | 2                      | 25.0                 | 55.0               |
| CY-TD330 | 330                         | 36                                       | 9.17                                     | 42.48                                  | 10.08                                   | 1950*992*45                    | 390                  | 955                  | 10-φ9x14           | 2000*1050*100            | 2                      | 25.0                 | 55.0               |



polycrystalline solar photovoltaic module



多晶硅太阳能模组

| 型号       | 最大功率<br>Peak Power<br>Pm(W) | 最佳工作电压<br>Maximum Power Voltage<br>Vm(V) | 最佳工作电流<br>Maximum Power Current<br>Im(A) | 开路电压<br>Open Circuit Voltage<br>(Voc)V | 短路电流<br>Short Circuit Current<br>Isc(A) | Module Dimension<br>W*L*H (mm) | 安装孔<br>纵向间距<br>A(mm) | 安装孔<br>横向间距<br>B(mm) | 安装孔<br>尺寸<br>N(mm) | Carton size<br>L*W*H(mm) | 装箱数量<br>Packing<br>pcs | Net weight<br>Kg/pcs | Gross weight<br>Kg |
|----------|-----------------------------|--|--|--|---|--------------------------------|----------------------|----------------------|--------------------|--------------------------|------------------------|----------------------|--------------------|
| CY-TP03  | 3                           | 9  | 0.34                                     | 10.62                                  | 0.36                                    | 180*150*18                     | 90                   | 120                  | 4-φ5x8             | 520*250*245              | 12                     | 0.5                  | 8.0                |
| CY-TP05  | 5                           | 9  | 0.56                                     | 10.62                                  | 0.61                                    | 270*150*18                     | 135                  | 120                  | 4-φ5x8             | 520*335*245              | 12                     | 0.7                  | 10.5               |
| CY-TP10  | 10                          | 18                                       | 0.34                                     | 21.24                                  | 0.36                                    | 330*290*25                     | 165                  | 250                  | 4-φ5x8             | 400*380*350              | 10                     | 1.5                  | 20.0               |
| CY-TP15  | 15                          | 18                                       | 0.84                                     | 21.24                                  | 0.91                                    | 420*350*25                     | 210                  | 320                  | 4-φ5x8             | 470*430*400              | 10                     | 2.5                  | 28.0               |
| CY-TP20  | 20                          | 18                                       | 1.12                                     | 21.24                                  | 1.22                                    | 535*350*25                     | 267.5                | 320                  | 4-φ5x8             | 600*400*420              | 6                      | 2.8                  | 19.0               |
| CY-TP25  | 25                          | 18                                       | 1.39                                     | 21.24                                  | 1.52                                    | 525*445*30                     | 262.5                | 405                  | 4-φ9x14            | 595*400*515              | 6                      | 3.5                  | 23.0               |
| CY-TP30  | 30                          | 18                                       | 1.67                                     | 21.24                                  | 1.83                                    | 535*515*30                     | 267.5                | 475                  | 4-φ9x14            | 605*400*585              | 6                      | 4.0                  | 26.0               |
| CY-TP35  | 35                          | 18                                       | 1.95                                     | 21.24                                  | 2.13                                    | 655*535*30                     | 327.5                | 495                  | 4-φ9x14            | 712*400*595              | 6                      | 4.5                  | 29.0               |
| CY-TP40  | 40                          | 18                                       | 2.23                                     | 21.24                                  | 2.45                                    | 655*535*30                     | 327.5                | 495                  | 4-φ9x14            | 712*400*595              | 6                      | 4.5                  | 29.0               |
| CY-TP50  | 50                          | 18                                       | 2.78                                     | 21.24                                  | 3.05                                    | 680*515*30                     | 340                  | 475                  | 4-φ9x14            | 1060*360*575             | 5                      | 7.0                  | 37.0               |
| CY-TP55  | 55                          | 18                                       | 3.06                                     | 21.24                                  | 3.36                                    | 1000*515*30                    | 500                  | 475                  | 4-φ9x14            | 1060*360*575             | 5                      | 7.0                  | 37.0               |
| CY-TP60  | 60                          | 18                                       | 3.34                                     | 21.24                                  | 3.66                                    | 1000*515*30                    | 500                  | 475                  | 4-φ9x14            | 1060*360*575             | 5                      | 7.0                  | 37.0               |
| CY-TP70  | 70                          | 18                                       | 3.89                                     | 21.24                                  | 4.27                                    | 1000*515*30                    | 500                  | 475                  | 4-φ9x14            | 1060*360*750             | 5                      | 8                    | 43.0               |
| CY-TP75  | 75                          | 18                                       | 4.17                                     | 21.24                                  | 4.58                                    | 1000*515*30                    | 500                  | 475                  | 4-φ9x14            | 1060*360*750             | 5                      | 8                    | 43.0               |
| CY-TP85  | 85                          | 18                                       | 4.73                                     | 21.24                                  | 5.19                                    | 1000*680*30                    | 500                  | 631                  | 4-φ9x14            | 1060*360*750             | 5                      | 8                    | 43.0               |
| CY-TP90  | 90                          | 18                                       | 5.00                                     | 21.24                                  | 5.50                                    | 1000*680*30                    | 500                  | 631                  | 4-φ9x14            | 1060*360*750             | 5                      | 8                    | 43.0               |
| CY-TP100 | 100                         | 18                                       | 5.56                                     | 21.24                                  | 6.10                                    | 1060*670*30                    | 530                  | 630                  | 4-φ9x14            | 1100*700*70              | 2                      | 10.0                 | 26.0               |
| CY-TP120 | 120                         | 18                                       | 6.67                                     | 21.24                                  | 7.33                                    | 1480*680*30                    | 740                  | 631                  | 4-φ9x14            | 1500*720*80              | 2                      | 12.0                 | 26.0               |
| CY-TP130 | 130                         | 18                                       | 7.23                                     | 21.24                                  | 7.90                                    | 1480*680*30                    | 740                  | 631                  | 4-φ9x14            | 1500*720*80              | 2                      | 12.0                 | 26.0               |
| CY-TP150 | 150                         | 18                                       | 8.33                                     | 21.24                                  | 9.17                                    | 1480*680*30                    | 740                  | 631                  | 4-φ9x14            | 1500*720*80              | 2                      | 16.0                 | 35.0               |
| CY-TP170 | 170                         | 36                                       | 4.73                                     | 42.48                                  | 5.19                                    | 1580*808*35                    | 395                  | 758                  | 8-φ9x14            | 1620*845*80              | 2                      | 16.0                 | 35.0               |
| CY-TP175 | 175                         | 36                                       | 4.86                                     | 42.48                                  | 5.34                                    | 1580*808*35                    | 395                  | 758                  | 8-φ9x14            | 1620*845*80              | 2                      | 16.0                 | 35.0               |
| CY-TP180 | 180                         | 24                                       | 7.50                                     | 30                                     | 8.25                                    | 1320*992*35                    | 330                  | 942                  | 8-φ9x14            | 1360*1040*80             | 2                      | 16.0                 | 35.0               |
| CY-TP190 | 190                         | 24                                       | 7.91                                     | 30                                     | 8.70                                    | 1320*992*35                    | 330                  | 942                  | 8-φ9x14            | 1360*1040*80             | 2                      | 22                   | 48.0               |
| CY-TP200 | 200                         | 24                                       | 8.33                                     | 30                                     | 9.17                                    | 1320*992*35                    | 330                  | 942                  | 8-φ9x14            | 1360*1040*80             | 2                      | 22                   | 48.0               |
| CY-TP220 | 230                         | 30                                       | 7.67                                     | 36                                     | 8.43                                    | 1640*992*40                    | 410                  | 942                  | 10-φ9x14           | 1680*1040*90             | 2                      | 25.0                 | 55.0               |
| CY-TP230 | 240                         | 30                                       | 8.00                                     | 36                                     | 8.80                                    | 1640*992*40                    | 410                  | 942                  | 10-φ9x14           | 1680*1040*90             | 2                      | 25.0                 | 55.0               |
| CY-TP250 | 250                         | 30                                       | 8.33                                     | 36                                     | 9.17                                    | 1640*992*40                    | 410                  | 942                  | 10-φ9x14           | 1680*1040*90             | 2                      | 25.0                 | 55.0               |
| CY-TP260 | 270                         | 36                                       | 7.50                                     | 42.48                                  | 8.25                                    | 1950*992*45                    | 390                  | 955                  | 10-φ9x14           | 2000*1050*100            | 2                      | 25.0                 | 55.0               |
| CY-TP280 | 280                         | 36                                       | 7.78                                     | 42.48                                  | 8.55                                    | 1950*992*45                    | 390                  | 955                  | 10-φ9x14           | 2000*1050*100            | 2                      | 25.0                 | 55.0               |
| CY-TP300 | 300                         | 36                                       | 8.33                                     | 42.48                                  | 9.17                                    | 1950*992*45                    | 390                  | 955                  | 10-φ9x14           | 2000*1050*100            | 2                      | 25.0                 | 55.0               |



Series Mono-crystalline Silicon PV Module

CY-TD80

KEY FEATURES

- ※ 36(4×9) high efficiency mono-crystalline silicon cells
- ※ Stable electrical performance
- ※ High conversion rate, close to the sum of solar cell power prior production
- ※ Excellent low-light performance
- ※ Anodized aluminum alloy, beautiful and durable
- ※ 25 years module power output warranty
- ※ Manufacturing plant comply with ISO9001



| Date (CY-TD)                 | 80  | 85    | 90    | 95    | 100   | 105   |
|------------------------------|---|-------|-------|-------|-------|-------|
| Maximum Power (Pmax)         | 80Wp  | 85Wp  | 90Wp  | 95Wp  | 100Wp | 105Wp |
| Open circuit Voltage (Voc)   | 21.24   | 21.24 | 21.24 | 21.24 | 21.24 | 21.24 |
| Short Circuit Current (Isc)  | 4.88  | 5.20  | 5.50  | 5.80  | 6.10  | 6.40  |
| Voltage at Pmax (Vmp)        | 18.00   | 18.00 | 18.00 | 18.00 | 18.00 | 18.00 |
| Current at Pmax (Imp)        | 4.45  | 4.72  | 5.00  | 5.28  | 5.56  | 5.83  |
| Maximum System Voltage       | 1000V   |       |       |       |       |       |
| Voc Temperature Coefficient  | -0.36%/°C                                     |       |       |       |       |       |
| Isc Temperature Coefficient  | 0.033%/°C                                     |       |       |       |       |       |
| Pmax Temperature Coefficient | -0.44%/°C                                     |       |       |       |       |       |
| Cell Type                    | 4×9, mono-crystalline silicon cell (125×125)  |       |       |       |       |       |
| Junction Box                 | IP65-2 Bypass diodes serviceable              |       |       |       |       |       |
| Type of Connector            | MC4 OR compatible connector                   |       |       |       |       |       |
| Wire                         | Length: 900mm, Cross area: 1×4mm <sup>2</sup> |       |       |       |       |       |
| Front Cover                  | 3.2mm thick, low iron tempered glass          |       |       |       |       |       |
| Back Cover                   | TPT (Tedlar-PET-Tedlar)                       |       |       |       |       |       |
| Encapsulant                  | EVA   |       |       |       |       |       |
| Frame                        | Anodized aluminium alloy                      |       |       |       |       |       |
| Dimensions                   | 1190×540×30mm                                 |       |       |       |       |       |
| Weight                       | 7.50kgs                                       |       |       |       |       |       |
| Max Impact Force             | 2,400Pa-5,400Pa                               |       |       |       |       |       |
| Max Load                     | 60m/s (240kg/sq.m)                            |       |       |       |       |       |
| Operating Temperature        | -40°C~+85°C                                   |       |       |       |       |       |

STC\*(Standard test conditions): irradiance 1000W/m<sup>2</sup>, Module Temperature 25°C, Air Mass 1.5  
 Power Tolerance: ±3%  
 Certifications: TUV, CE, IEC61215, ROHS and CGC

单晶硅太阳能电池组件系列

CY-TD80

主要特点

- ※ 36(4×9) 高效单晶硅电池片
- ※ 稳定的电性能输出
- ※ 高质量的太阳能晶体硅电池片和优质的原材料保证了组件的高转换效率
- ※ 弱光性能好保证了太阳能电池组件的稳定电压输出
- ※ 氧化铝边框，美观、耐用
- ※ 电性能和功率输出质保25年
- ※ 制造工厂符合ISO9001管理体系



| 参数 (CY-TD)   | 80                                 | 85    | 90    | 95    | 100   | 105   |
|--------------|------------------------------------|-------|-------|-------|-------|-------|
| 最大功率(Pmax)   | 80Wp                               | 85Wp  | 90Wp  | 95Wp  | 100Wp | 105Wp |
| 开路电压 (Voc)   | 21.24                              | 21.24 | 21.24 | 21.24 | 21.24 | 21.24 |
| 短路电流 (Isc)   | 4.88                               | 5.20  | 5.50  | 5.80  | 6.10  | 6.40  |
| 最大工作电压 (Vmp) | 18.00                              | 18.00 | 18.00 | 18.00 | 18.00 | 18.00 |
| 最大工作电流 (Imp) | 4.45                               | 4.72  | 5.00  | 5.28  | 5.56  | 5.83  |
| 最大系统电压       | 1000V                              |       |       |       |       |       |
| 电压温度系数       | -0.36%/°C                          |       |       |       |       |       |
| 电流温度系数       | 0.033%/°C                          |       |       |       |       |       |
| 功率温度系数       | -0.44%/°C                          |       |       |       |       |       |
| 电池片类型        | 4×9,单晶硅电池片(125×125)                |       |       |       |       |       |
| 接线盒          | IP65-2 个旁路二极管                      |       |       |       |       |       |
| 连接器          | MC4或相兼容的连接器                        |       |       |       |       |       |
| 电缆           | 长度: 900mm, 截面积: 1×4mm <sup>2</sup> |       |       |       |       |       |
| 玻璃           | 3.2mm低铁超白钢化玻璃                      |       |       |       |       |       |
| 背板           | TPT (Tedlar-PET-Tedlar)            |       |       |       |       |       |
| 封装材料         | EVA                                |       |       |       |       |       |
| 边框           | 氧化铝合金                              |       |       |       |       |       |
| 组件规格         | 1190×540×30mm                      |       |       |       |       |       |
| 组件重量         | 7.50kgs                            |       |       |       |       |       |
| 风压/雪压        | 2,400Pa-5,400Pa                    |       |       |       |       |       |
| 风荷载          | 60m/s (240kg/sq.m)                 |       |       |       |       |       |
| 工作温度范围       | -40°C~+85°C                        |       |       |       |       |       |

标准测试条件:光强 1000W/m<sup>2</sup>,组件测试温度e 25°C,空气质量 1.5  
 公差范围:±3%  
 认证:TUV,CE, IEC61215, ROHS and CGC

Series polycrystalline Silicon PV Module

CY-TP130

KEY FEATURES

- ※ 36(4×9) high efficiency poly-crystalline silicon cells
- ※ Stable electrical performance
- ※ High conversion rate, close to the sum of solar cell power prior production
- ※ Excellent low-light performance
- ※ Anodized aluminum alloy, beautiful and durable
- ※ 25 years module power output warranty
- ※ Manufacturing plant comply with ISO9001



| Date (CY-TP)                 | 130   | 135   | 140   | 145   | 150   | 155   |
|------------------------------|---|-------|-------|-------|-------|-------|
| Maximum Power (Pmax)         | 130Wp   | 135Wp | 140Wp | 145Wp | 150Wp | 155Wp |
| Open circuit Voltage (Voc)   | 21.24   | 21.24 | 21.24 | 21.24 | 21.24 | 21.24 |
| Short Circuit Current (Isc)  | 7.94  | 8.25  | 8.56  | 8.86  | 9.17  | 9.47  |
| Voltage at Pmax (Vmp)        | 18.00   | 18.00 | 18.00 | 18.00 | 18.00 | 18.00 |
| Current at Pmax (Imp)        | 7.22  | 7.50  | 7.78  | 8.05  | 8.33  | 8.61  |
| Maximum System Voltage       | 1000V   |       |       |       |       |       |
| Voc Temperature Coefficient  | -0.36%/°C                                     |       |       |       |       |       |
| Isc Temperature Coefficient  | 0.033%/°C                                     |       |       |       |       |       |
| Pmax Temperature Coefficient | -0.44%/°C                                     |       |       |       |       |       |
| Cell Type                    | 4×9, poly-crystalline silicon cell (156×156)  |       |       |       |       |       |
| Junction Box                 | IP65-2 Bypass diodes serviceable              |       |       |       |       |       |
| Type of Connector            | MC4 OR compatible connector                   |       |       |       |       |       |
| Wire                         | Length: 900mm, Cross area: 1×4mm <sup>2</sup> |       |       |       |       |       |
| Front Cover                  | 3.2mm thick, low iron tempered glass          |       |       |       |       |       |
| Back Cover                   | TPT (Tedlar-PET-Tedlar)                       |       |       |       |       |       |
| Encapsulant                  | EVA   |       |       |       |       |       |
| Frame                        | Anodized aluminium alloy                      |       |       |       |       |       |
| Dimensions                   | 1480×680×30mm                                 |       |       |       |       |       |
| Weight                       | 11.80kgs                                      |       |       |       |       |       |
| Max Impact Force             | 2,400Pa-5,400Pa                               |       |       |       |       |       |
| Max Load                     | 60m/s (240kg/sq.m)                            |       |       |       |       |       |
| Operating Temperature        | -40°C~+85°C                                   |       |       |       |       |       |

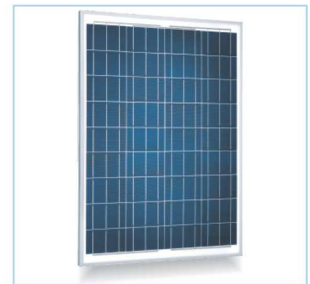
STC\*(Standard test conditions): irradiance 1000W/m<sup>2</sup>, Module Temperature 25°C, Air Mass 1.5  
 Power Tolerance: ±3%  
 Certifications: TUV, CE, IEC61215, ROHS and CGC

多晶硅太阳能电池组件系列

CY-TP130

主要特点

- ※ 36(4×9) 高效多晶硅电池片
- ※ 稳定的电性能输出
- ※ 高质量的太阳能晶体硅电池片和优质的原材料保证了组件的高转换效率
- ※ 弱光性能好保证了太阳能电池组件的稳定电压输出
- ※ 氧化铝铝边框，美观、耐用
- ※ 电性能和功率输出质保25年
- ※ 制造工厂符合ISO9001管理体系



| 参数 (CY-TP)   | 130                                | 135   | 140   | 145   | 150   | 155   |
|--------------|------------------------------------|-------|-------|-------|-------|-------|
| 最大功率(Pmax)   | 130Wp                              | 135Wp | 140Wp | 145Wp | 150Wp | 155Wp |
| 开路电压 (Voc)   | 21.24                              | 21.24 | 21.24 | 21.24 | 21.24 | 21.24 |
| 短路电流 (Isc)   | 7.94                               | 8.25  | 8.56  | 8.86  | 9.17  | 9.47  |
| 最大工作电压 (Vmp) | 18.00                              | 18.00 | 18.00 | 18.00 | 18.00 | 18.00 |
| 最大工作电流 (Imp) | 7.22                               | 7.50  | 7.78  | 8.05  | 8.33  | 8.61  |
| 最大系统电压       | 1000V                              |       |       |       |       |       |
| 电压温度系数       | -0.36%/°C                          |       |       |       |       |       |
| 电流温度系数       | 0.033%/°C                          |       |       |       |       |       |
| 功率温度系数       | -0.44%/°C                          |       |       |       |       |       |
| 电池片类型        | 4×9, 多晶硅电池片(156×156)               |       |       |       |       |       |
| 接线盒          | IP65-2个旁路二极管                       |       |       |       |       |       |
| 连接器          | MC4 或兼容的连接器                        |       |       |       |       |       |
| 电缆           | 长度: 900mm, 截面积: 1×4mm <sup>2</sup> |       |       |       |       |       |
| 玻璃           | 3.2mm 低铁超白钢化玻璃                     |       |       |       |       |       |
| 背板           | TPT (Tedlar-PET-Tedlar)            |       |       |       |       |       |
| 封装材料         | EVA                                |       |       |       |       |       |
| 边框           | 氧化铝合金                              |       |       |       |       |       |
| 组件规格         | 1480×680×30mm                      |       |       |       |       |       |
| 组件重量         | 11.80kgs                           |       |       |       |       |       |
| 风压/雪压        | 2,400Pa-5,400Pa                    |       |       |       |       |       |
| 风荷载          | 60m/s (240kg/sq.m)                 |       |       |       |       |       |
| 操作温度         | -40°C~+85°C                        |       |       |       |       |       |

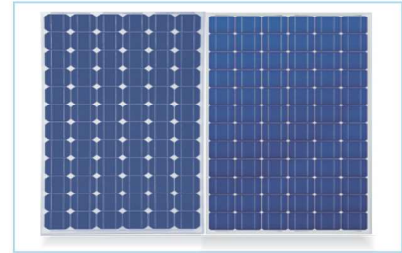
标准测试条件:光强 1000W/m<sup>2</sup>,组件测试温度e 25°C,空气质量 1.5  
 公差范围:±3%  
 认证:TUV, CE, IEC61215, ROHS and CGC

Series Mono-crystalline Silicon PV Module

CY-TD185

KEY FEATURES

- ※ 72(6×12) high efficiency mono-crystalline silicon cells
- ※ Stable electrical performance
- ※ High conversion rate, close to the sum of solar cell power prior production
- ※ Excellent low-light performance
- ※ Anodized aluminum alloy, beautiful and durable
- ※ 25 years module power output warranty
- ※ Manufacturing plant comply with ISO9001



| Date (CY-TD)                 | 185   | 190   | 195   | 200   | 205   | 210   | 220   |
|------------------------------|---|-------|-------|-------|-------|-------|-------|
| Maximum Power (Pmax)         | 185Wp   | 190Wp | 195Wp | 200Wp | 205Wp | 210Wp | 220Wp |
| Open circuit Voltage (Voc)   | 42.48   | 42.48 | 42.48 | 42.48 | 42.48 | 42.48 | 42.48 |
| Short Circuit Current (Isc)  | 5.65  | 5.81  | 5.95  | 6.10  | 6.26  | 6.40  | 6.72  |
| Voltage at Pmax (Vmp)        | 36.00   | 36.00 | 36.00 | 36.00 | 36.00 | 36.00 | 36.00 |
| Current at Pmax (Imp)        | 5.14  | 5.28  | 5.42  | 5.56  | 5.69  | 5.83  | 6.10  |
| Maximum System Voltage       | 1000V   |       |       |       |       |       |       |
| Voc Temperature Coefficient  | -0.36%/°C                                     |       |       |       |       |       |       |
| Isc Temperature Coefficient  | 0.033%/°C                                     |       |       |       |       |       |       |
| Pmax Temperature Coefficient | -0.44%/°C                                     |       |       |       |       |       |       |
| Cell Type                    | 6×12, mono-crystalline silicon cell (125×125) |       |       |       |       |       |       |
| Junction Box                 | IP65-3 Bypass diodes serviceable              |       |       |       |       |       |       |
| Type of Connector            | MC4 OR compatible connector                   |       |       |       |       |       |       |
| Wire                         | Length: 900mm, Cross area: 1×4mm <sup>2</sup> |       |       |       |       |       |       |
| Front Cover                  | 3.2mm thick, low iron tempered glass          |       |       |       |       |       |       |
| Back Cover                   | TPT (Tedlar-PET-Tedlar)                       |       |       |       |       |       |       |
| Encapsulant                  | EVA   |       |       |       |       |       |       |
| Frame                        | Anodized aluminium alloy                      |       |       |       |       |       |       |
| Dimensions                   | 1580×808×35mm                                 |       |       |       |       |       |       |
| Weight                       | 15.50kgs                                      |       |       |       |       |       |       |
| Max Impact Force             | 2,400Pa-5,400Pa                               |       |       |       |       |       |       |
| Max Load                     | 60m/s (240kg/sq.m)                            |       |       |       |       |       |       |
| Operating Temperature        | -40°C~+85°C                                   |       |       |       |       |       |       |

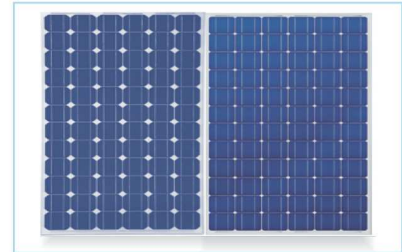
STC\*(Standard test conditions): irradiance 1000W/m<sup>2</sup>, Module Temperature 25°C, Air Mass 1.5  
 Power Tolerance: ±3%  
 Certifications: TUV, CE, IEC61215, ROHS and CGC

单晶硅太阳能电池组件系列

CY-TD185

主要特点

- ※ 72(6×12) 高效单晶硅电池片
- ※ 稳定的电性能输出
- ※ 高质量的太阳能晶体硅电池片和优质的原材料保证了组件的高转换效率
- ※ 弱光性能好保证了太阳能电池组件的稳定电压输出
- ※ 氧化铝边框，美观、耐用
- ※ 电性能和功率输出质保25年
- ※ 制造工厂符合ISO9001管理体系



| 参数 (CY-TD)   | 185                                | 190   | 195   | 200   | 205   | 210   | 220   |
|--------------|------------------------------------|-------|-------|-------|-------|-------|-------|
| 最大功率 (Pmax)  | 185Wp                              | 190Wp | 195Wp | 200Wp | 205Wp | 210Wp | 220Wp |
| 开路电压 (Voc)   | 42.48                              | 42.48 | 42.48 | 42.48 | 42.48 | 42.48 | 42.48 |
| 短路电流 (Isc)   | 5.65                               | 5.81  | 5.95  | 6.10  | 6.26  | 6.40  | 6.72  |
| 最大工作电压 (Vmp) | 36.00                              | 36.00 | 36.00 | 36.00 | 36.00 | 36.00 | 36.00 |
| 最大工作电流 (Imp) | 5.14                               | 5.28  | 5.42  | 5.56  | 5.69  | 5.83  | 6.10  |
| 最大系统电压       | 1000V                              |       |       |       |       |       |       |
| 电压温度系数       | -0.36%/°C                          |       |       |       |       |       |       |
| 电流温度系数       | 0.033%/°C                          |       |       |       |       |       |       |
| 功率温度系数       | -0.44%/°C                          |       |       |       |       |       |       |
| 电池片类型        | 6×12, 单晶硅电池片 (125×125)             |       |       |       |       |       |       |
| 接线盒          | IP65-3 个旁路二极管                      |       |       |       |       |       |       |
| 连接器          | MC4或兼容的连接器                         |       |       |       |       |       |       |
| 电缆           | 长度: 900mm, 截面积: 1×4mm <sup>2</sup> |       |       |       |       |       |       |
| 玻璃           | 3.2mm低铁超白钢化玻璃                      |       |       |       |       |       |       |
| 背板           | TPT (Tedlar-PET-Tedlar)            |       |       |       |       |       |       |
| 封装材料         | EVA                                |       |       |       |       |       |       |
| 边框           | 氧化铝合金                              |       |       |       |       |       |       |
| 组件规格         | 1580×808×35mm                      |       |       |       |       |       |       |
| 组件重量         | 15.50kgs                           |       |       |       |       |       |       |
| 风压/雪压        | 2,400Pa-5,400Pa                    |       |       |       |       |       |       |
| 风荷载          | 60m/s (240kg/sq.m)                 |       |       |       |       |       |       |
| 工作温度范围       | -40°C~+85°C                        |       |       |       |       |       |       |

标准测试条件: 光强 1000W/m<sup>2</sup>, 组件测试温度 25°C, 空气质量 1.5  
 公差范围: ±3%  
 认证: TUV, CE, IEC61215, ROHS and CGC



Series Mono-crystalline Silicon PV Module

CY-TD240

KEY FEATURES

- ※ 60(6×10) high efficiency mono-crystalline silicon cells
- ※ Stable electrical performance
- ※ High conversion rate, close to the sum of solar cell power prior production
- ※ Excellent low-light performance
- ※ Anodized aluminum alloy, beautiful and durable
- ※ 25 years module power output warranty
- ※ Manufacturing plant comply with ISO9001



| Date (CY-TD)                 | 240   | 245   | 250   | 255   | 260   | 270   |
|------------------------------|---|-------|-------|-------|-------|-------|
| Maximum Power (Pmax)         | 240Wp   | 245Wp | 250Wp | 255Wp | 260Wp | 270Wp |
| Open circuit Voltage (Voc)   | 36.00   | 36.00 | 36.00 | 36.00 | 36.00 | 36.00 |
| Short Circuit Current (Isc)  | 8.80  | 8.98  | 9.17  | 9.35  | 9.53  | 9.90  |
| Voltage at Pmax (Vmp)        | 30.00   | 30.00 | 30.00 | 30.00 | 30.00 | 30.00 |
| Current at Pmax (Imp)        | 8.00  | 8.16  | 8.33  | 8.50  | 8.66  | 9.00  |
| Maximum System Voltage       | 1000V   |       |       |       |       |       |
| Voc Temperature Coefficient  | -0.36%/°C                                     |       |       |       |       |       |
| Isc Temperature Coefficient  | 0.033%/°C                                     |       |       |       |       |       |
| Pmax Temperature Coefficient | -0.44%/°C                                     |       |       |       |       |       |
| Cell Type                    | 6×10, mono-crystalline silicon cell (156×156) |       |       |       |       |       |
| Junction Box                 | IP65-6 Bypass diodes serviceable              |       |       |       |       |       |
| Type of Connector            | MC4 OR compatible connector                   |       |       |       |       |       |
| Wire                         | Length: 900mm, Cross area: 1×4mm <sup>2</sup> |       |       |       |       |       |
| Front Cover                  | 3.2mm thick, low iron tempered glass          |       |       |       |       |       |
| Back Cover                   | TPT (Tedlar-PET-Tedlar)                       |       |       |       |       |       |
| Encapsulant                  | EVA   |       |       |       |       |       |
| Frame                        | Anodized aluminium alloy                      |       |       |       |       |       |
| Dimensions                   | 1640×992×40mm                                 |       |       |       |       |       |
| Weight                       | 19.50kgs                                      |       |       |       |       |       |
| Max Impact Force             | 2,400Pa-5,400Pa                               |       |       |       |       |       |
| Max Load                     | 60m/s (240kg/sq.m)                            |       |       |       |       |       |
| Operating Temperature        | -40°C~+85°C                                   |       |       |       |       |       |

STC\*(Standard test conditions): irradiance 1000W/m<sup>2</sup>, Module Temperature 25°C, Air Mass 1.5

Power Tolerance: ±3%

Certifications: TUV,CE, IEC61215,ROHS and CGC

单晶硅太阳能电池组件系列

CY-TD240

主要特点

- ※ 60(6×10) 高效单晶硅电池片
- ※ 稳定的电性能输出
- ※ 高质量的太阳能晶体硅电池片和优质的原材料保证了组件的高转换效率
- ※ 弱光性能好保证了太阳能电池组件的稳定电压输出
- ※ 氧化铝边框，美观、耐用
- ※ 电性能和功率输出质保25年
- ※ 制造工厂符合ISO9001管理体系



| 参数 (CY-TD)   | 240                                | 245   | 250   | 255   | 260   | 270   |
|--------------|------------------------------------|-------|-------|-------|-------|-------|
| 最大功率(Pmax)   | 240Wp                              | 245Wp | 250Wp | 255Wp | 260Wp | 270Wp |
| 开路电压 (Voc)   | 36.00                              | 36.00 | 36.00 | 36.00 | 36.00 | 36.00 |
| 短路电流 (Isc)   | 8.80                               | 8.98  | 9.17  | 9.35  | 9.53  | 9.90  |
| 最大工作电压 (Vmp) | 30.00                              | 30.00 | 30.00 | 30.00 | 30.00 | 30.00 |
| 最大工作电流 (Imp) | 8.00                               | 8.16  | 8.33  | 8.50  | 8.66  | 9.00  |
| 最大系统电压       | 1000V                              |       |       |       |       |       |
| 电压温度系数       | -0.36%/°C                          |       |       |       |       |       |
| 电流温度系数       | 0.033%/°C                          |       |       |       |       |       |
| 功率温度系数       | -0.44%/°C                          |       |       |       |       |       |
| 电池片类型        | 6×10, 单晶硅电池片(156×156)              |       |       |       |       |       |
| 接线盒          | IP65-6 个旁路二极管                      |       |       |       |       |       |
| 连接器          | MC4 或相兼容的连接器                       |       |       |       |       |       |
| 电缆           | 长度: 900mm, 截面积: 1×4mm <sup>2</sup> |       |       |       |       |       |
| 玻璃           | 3.2mm 低铁超白钢化玻璃                     |       |       |       |       |       |
| 背板           | TPT (Tedlar-PET-Tedlar)            |       |       |       |       |       |
| 封装材料         | EVA                                |       |       |       |       |       |
| 边框           | 氧化铝合金                              |       |       |       |       |       |
| 组件规格         | 1640×992×40mm                      |       |       |       |       |       |
| 组件重量         | 19.50kgs                           |       |       |       |       |       |
| 风压/雪压        | 2,400Pa-5,400Pa                    |       |       |       |       |       |
| 风荷载          | 60m/s (240kg/sq.m)                 |       |       |       |       |       |
| 操作温度         | -40°C~+85°C                        |       |       |       |       |       |

标准测试条件:光强 1000W/m<sup>2</sup>,组件测试温度e 25°C,空气质量 1.5

公差范围:±3%

认证:TUV,CE, IEC61215,ROHS and CGC

Series Poly-crystalline Silicon PV Module

CY-TP240

KEY FEATURES

- ※ 60(6×10) high efficiency poly-crystalline silicon cells
- ※ Stable electrical performance
- ※ High conversion rate, close to the sum of solar cell power prior production
- ※ Excellent low-light performance
- ※ Anodized aluminum alloy, beautiful and durable
- ※ 25 years module power output warranty
- ※ Manufacturing plant comply with ISO9001



| Date (CY-TP)                 | 230   | 235   | 240   | 245   | 250   | 255   | 260   |
|------------------------------|---|-------|-------|-------|-------|-------|-------|
| Maximum Power (Pmax)         | 230Wp   | 235Wp | 240Wp | 245Wp | 250Wp | 255Wp | 260Wp |
| Open circuit Voltage (Voc)   | 36.00   | 36.00 | 36.00 | 36.00 | 36.00 | 36.00 | 36.00 |
| Short Circuit Current (Isc)  | 8.41  | 8.61  | 8.80  | 8.98  | 9.17  | 9.35  | 9.53  |
| Voltage at Pmax (Vmp)        | 30.00   | 30.00 | 30.00 | 30.00 | 30.00 | 30.00 | 30.00 |
| Current at Pmax (Imp)        | 7.66  | 7.83  | 8.00  | 8.17  | 8.33  | 8.50  | 8.67  |
| Maximum System Voltage       | 1000V   |       |       |       |       |       |       |
| Voc Temperature Coefficient  | -0.36%/°C                                     |       |       |       |       |       |       |
| Isc Temperature Coefficient  | 0.033%/°C                                     |       |       |       |       |       |       |
| Pmax Temperature Coefficient | -0.44%/°C                                     |       |       |       |       |       |       |
| Cell type                    | 6×10, Poly-crystalline silicon cell (156×156) |       |       |       |       |       |       |
| Junction Box                 | IP65-6 Bypass diodes serviceable              |       |       |       |       |       |       |
| Type of Connector            | MC4 OR compatible connector                   |       |       |       |       |       |       |
| Wire                         | Length: 900mm, Cross area: 1×4mm <sup>2</sup> |       |       |       |       |       |       |
| Front Cover                  | 3.2mm thick, low iron tempered glass          |       |       |       |       |       |       |
| Back Cover                   | TPT (Tedlar-PET-Tedlar)                       |       |       |       |       |       |       |
| Encapsulant                  | EVA   |       |       |       |       |       |       |
| Frame                        | Anodized aluminium alloy                      |       |       |       |       |       |       |
| Dimensions                   | 1640×992×40mm                                 |       |       |       |       |       |       |
| Weight                       | 19.50kgs                                      |       |       |       |       |       |       |
| Max Impact Force             | 2,400Pa-5,400Pa                               |       |       |       |       |       |       |
| Max Load                     | 60m/s (240kg/sq.m)                            |       |       |       |       |       |       |
| Operating Temperature        | -40°C~+85°C                                   |       |       |       |       |       |       |

STC\*(Standard test conditions): irradiance 1000W/m<sup>2</sup>, Module Temperature 25°C, Air Mass 1.5  
 Power Tolerance: ±3%  
 Certifications: TUV, CE, IEC61215, ROHS and CGC

多晶硅太阳能电池组件系列

CY-TP240

主要特点

- ※ 60(6×10) 高效多晶硅电池片
- ※ 稳定的电性能输出
- ※ 高质量的太阳能晶体硅电池片和优质的原材料保证了组件的高转换效率
- ※ 弱光性能好保证了太阳能电池组件的稳定电压输出
- ※ 氧化铝边框，美观、耐用
- ※ 电性能和功率输出质保25年
- ※ 制造工厂符合ISO9001管理体系



| 参数 (CY-TP)   | 230                                | 235   | 240   | 245   | 250   | 255   | 260   |
|--------------|------------------------------------|-------|-------|-------|-------|-------|-------|
| 最大功率(Pmax)   | 230Wp                              | 235Wp | 240Wp | 245Wp | 250Wp | 255Wp | 260Wp |
| 开路电压 (Voc)   | 36.00                              | 36.00 | 36.00 | 36.00 | 36.00 | 36.00 | 36.00 |
| 短路电流 (Isc)   | 8.41                               | 8.61  | 8.80  | 8.98  | 9.17  | 9.35  | 9.53  |
| 最大工作电压 (Vmp) | 30.00                              | 30.00 | 30.00 | 30.00 | 30.00 | 30.00 | 30.00 |
| 最大工作电流 (Imp) | 7.66                               | 7.83  | 8.00  | 8.17  | 8.33  | 8.50  | 8.67  |
| 最大系统电压       | 1000V                              |       |       |       |       |       |       |
| 电压温度系数       | -0.36%/°C                          |       |       |       |       |       |       |
| 电流温度系数       | 0.033%/°C                          |       |       |       |       |       |       |
| 功率温度系数       | -0.44%/°C                          |       |       |       |       |       |       |
| 电池片类型        | 6×10, 多晶硅电池片(156×156)              |       |       |       |       |       |       |
| 接线盒          | IP65-6 个旁路二极管                      |       |       |       |       |       |       |
| 连接器          | MC4 或相兼容的连接器                       |       |       |       |       |       |       |
| 电缆           | 长度: 900mm, 截面积: 1×4mm <sup>2</sup> |       |       |       |       |       |       |
| 玻璃           | 3.2mm 低铁超白钢化玻璃                     |       |       |       |       |       |       |
| 背板           | TPT (Tedlar-PET-Tedlar)            |       |       |       |       |       |       |
| 封装材料         | EVA                                |       |       |       |       |       |       |
| 边框           | 氧化铝合金                              |       |       |       |       |       |       |
| 组件规格         | 1640×992×45mm                      |       |       |       |       |       |       |
| 组件重量         | 19.50kgs                           |       |       |       |       |       |       |
| 风压/雪压        | 2,400Pa-5,400Pa                    |       |       |       |       |       |       |
| 风荷载          | 60m/s (240kg/sq.m)                 |       |       |       |       |       |       |
| 操作温度         | -40°C~+85°C                        |       |       |       |       |       |       |

标准测试条件: 光强 1000W/m<sup>2</sup>, 组件测试温度 25°C, 空气质量 1.5  
 公差范围: ±3%  
 认证: TUV, CE, IEC61215, ROHS and CGC

Series Mono-crystalline Silicon PV Module

CY-TD280

KEY FEATURES

- ※ 72(6×12) high efficiency mono-crystalline silicon cells
- ※ Stable electrical performance
- ※ High conversion rate, close to the sum of solar cell power prior production
- ※ Excellent low-light performance
- ※ Anodized aluminum alloy, beautiful and durable
- ※ 25 years module power output warranty
- ※ Manufacturing plant comply with ISO9001



| Date (CY-TD)                 | 280   | 285   | 290   | 300   | 310   | 320   | 330   |
|------------------------------|---|-------|-------|-------|-------|-------|-------|
| Maximum Power (Pmax)         | 280Wp   | 285Wp | 290Wp | 300Wp | 310Wp | 320Wp | 330Wp |
| Open circuit Voltage (Voc)   | 42.48   | 42.48 | 42.48 | 42.48 | 42.48 | 42.48 | 42.48 |
| Short Circuit Current (Isc)  | 8.55  | 8.70  | 8.78  | 9.17  | 9.47  | 9.10  | 9.78  |
| Voltage at Pmax (Vmp)        | 36.00   | 36.00 | 36.00 | 36.00 | 36.00 | 36.00 | 36.00 |
| Current at Pmax (Imp)        | 7.78  | 7.92  | 8.07  | 8.33  | 8.61  | 8.46  | 8.88  |
| Maximum System Voltage       | 1000V   |       |       |       |       |       |       |
| Voc Temperature Coefficient  | -0.36%/°C                                     |       |       |       |       |       |       |
| Isc Temperature Coefficient  | 0.033%/°C                                     |       |       |       |       |       |       |
| Pmax Temperature Coefficient | -0.44%/°C                                     |       |       |       |       |       |       |
| Cell type                    | 6×12, mono-crystalline silicon cell (156×156) |       |       |       |       |       |       |
| Junction Box                 | IP65-6 Bypass diodes serviceable              |       |       |       |       |       |       |
| Type of Connector            | MC4 OR compatible connector                   |       |       |       |       |       |       |
| Wire                         | Length: 900mm, Cross area: 1×4mm <sup>2</sup> |       |       |       |       |       |       |
| Front Cover                  | 3.2mm thick, low iron tempered glass          |       |       |       |       |       |       |
| Back Cover                   | TPT (Tedlar-PET-Tedlar)                       |       |       |       |       |       |       |
| Encapsulant                  | EVA   |       |       |       |       |       |       |
| Frame                        | Anodied aluminium alloy                       |       |       |       |       |       |       |
| Dimensions                   | 1950×992×45mm                                 |       |       |       |       |       |       |
| Weight                       | 24.00kgs                                      |       |       |       |       |       |       |
| Max. Impact Force            | 2,400Pa-5,400Pa                               |       |       |       |       |       |       |
| Max Load                     | 60m/s (240kg/sq.m)                            |       |       |       |       |       |       |
| Operating Temperature        | -40°C~+85°C                                   |       |       |       |       |       |       |

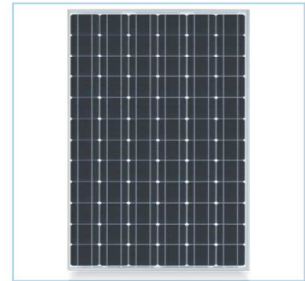
STC\*(Standard test conditions): irradiance 1000W/m<sup>2</sup>, Module Temperature 25°C, Air Mass 1.5  
 Power Tolerance:±3%  
 Certifications: TUV,CE, IEC61215,ROHS and CGC

单晶硅太阳能电池组件系列

CY-TD280

主要特点

- ※ 72(6×12) 高效单晶硅电池片
- ※ 稳定的电性能输出
- ※ 高质量的太阳能晶体硅电池片和优质的原材料保证了组件的高转换效率
- ※ 弱光性能好保证了太阳能电池组件的稳定电压输出
- ※ 氧化铝边框, 美观、耐用
- ※ 电性能和功率输出质保25年
- ※ 制造工厂符合ISO9001管理体系



| 参数 (CY-TD)   | 280                              | 285   | 290   | 300   | 310   | 320   | 330   |
|--------------|----------------------------------|-------|-------|-------|-------|-------|-------|
| 最大功率(Pmax)   | 280Wp                            | 285Wp | 290Wp | 300Wp | 310Wp | 320Wp | 330Wp |
| 开路电压 (Voc)   | 42.48                            | 42.48 | 42.48 | 42.48 | 42.48 | 42.48 | 42.48 |
| 短路电流 (Isc)   | 8.55                             | 8.70  | 8.78  | 9.17  | 9.47  | 9.10  | 9.78  |
| 最大工作电压 (Vmp) | 36.00                            | 36.00 | 36.00 | 36.00 | 36.00 | 36.00 | 36.00 |
| 最大工作电流 (Imp) | 7.78                             | 7.92  | 8.07  | 8.33  | 8.61  | 8.46  | 8.88  |
| 最大系统电压       | 1000V                            |       |       |       |       |       |       |
| 电压温度系数       | -0.36%/°C                        |       |       |       |       |       |       |
| 电流温度系数       | 0.033%/°C                        |       |       |       |       |       |       |
| 功率温度系数       | -0.44%/°C                        |       |       |       |       |       |       |
| 电池片类型        | 6×12,单晶硅电池片(156×156)             |       |       |       |       |       |       |
| 接线盒          | IP65-6个旁路二极管                     |       |       |       |       |       |       |
| 连接器          | MC4 或兼容的连接器的                     |       |       |       |       |       |       |
| 电缆           | 长度: 900mm,截面积:1×4mm <sup>2</sup> |       |       |       |       |       |       |
| 玻璃           | 3.2mm 低铁超白钢化玻璃                   |       |       |       |       |       |       |
| 背板           | TPT (Tedlar-PET-Tedlar)          |       |       |       |       |       |       |
| 封装材料         | EVA                              |       |       |       |       |       |       |
| 边框           | 氧化铝合金                            |       |       |       |       |       |       |
| 组件规格         | 1950×992×45mm                    |       |       |       |       |       |       |
| 组件重量         | 24.00kgs                         |       |       |       |       |       |       |
| 风压/雪压        | 2,400Pa-5,400Pa                  |       |       |       |       |       |       |
| 风荷载          | 60m/s (240kg/sq.m)               |       |       |       |       |       |       |
| 操作温度         | -40°C~+85°C                      |       |       |       |       |       |       |

标准测试条件:光强 1000W/m<sup>2</sup>,组件测试温度e 25°C,空气质量 1.5  
 公差范围:±3%  
 认证:TUV,CE, IEC61215,ROHS and CGC



◀◀ 太陽能小壁灯



| 名称       | 功率 | 功能                  | 产品型号  | 配置                 | 规格                   |
|----------|----|---------------------|-------|--------------------|----------------------|
| 太阳能人体感应灯 | 1W | 光控<br>红外线感应<br>弱光模式 | LX001 | 电池<br>LED灯<br>太阳能板 | 0.55W<br>800MA<br>1W |
| 太阳能声控灯   | 1W | 光控<br>声控<br>弱光模式    | LX002 | 电池<br>LED灯<br>太阳能板 | 0.55W<br>800MA<br>1W |
| 太阳能人体感应灯 | 3W | 光控<br>红外线感应<br>弱光模式 | LX003 | 电池<br>LED灯<br>太阳能板 | 3W<br>4400MA<br>3W   |
| 太阳能声控灯   | 3W | 光控<br>声控<br>弱光模式    | LX004 | 电池<br>LED灯<br>太阳能板 | 3W<br>4400MA<br>3W   |

◀◀ 太陽能滅蚊灯



| LX-MW-5 |                      |
|---------|----------------------|
| 材质      | 全不锈钢                 |
| 电流      | <6mA                 |
| 电池      | 5AH                  |
| 总功率     | 9W                   |
| 太阳能板    | 10W                  |
| 电网高压    | 5.5KV                |
| 灭蚊方式    | 频振式                  |
| 实用电压    | DC12V                |
| 杀虫面积    | 50-100m <sup>2</sup> |
| 使用环境    | 室外型                  |



| LX-MW-10 |                     |
|----------|---------------------|
| 电流       | <6mA                |
| 电池       | 1800MAH             |
| 太阳能板     | 2.2W                |
| 电网高压     | 1.2KV               |
| 灭蚊功率     | 0.8W                |
| 照明功率     | 1W (LED)            |
| 灭蚊方式     | 频振式                 |
| 实用电压     | DC3.6V              |
| 杀虫面积     | 50-80m <sup>2</sup> |
| 使用环境     | 室内/室外型              |

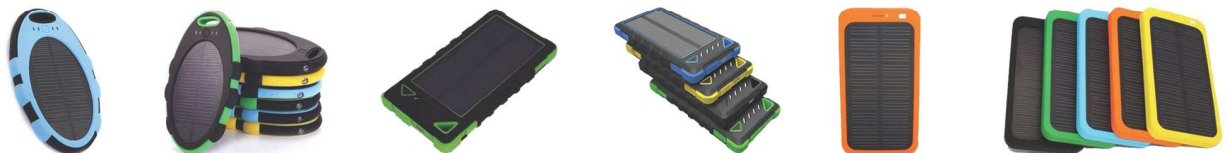
◀◀ 太陽能携帶電源



**规格参数**  
 产品容量：3600mAh  
 产品尺寸：115 × 63 × 13 mm  
 额定输入：DC5V/1A  
 智能输出：DC5V/1A  
 充电时间：约4小时



**规格参数**  
 产品容量：5600mAh  
 产品尺寸：121 × 75 × 14 mm  
 额定输入：DC5V/1A  
 智能输出：DC5V/1A  
 充电时间：约6小时



《《 太陽能街燈

家用太陽庭院燈

INNOVATION OF AUTOMATIC

太陽能板：5.4V/10W  
 功 率：3-6W  
 电 池：磷酸鐵鋰電池  
 電池容量：3.2V/9.6AH  
 包裝尺寸：420\*340\*290MM  
 重 量：6.2Kg

家用太陽庭院燈

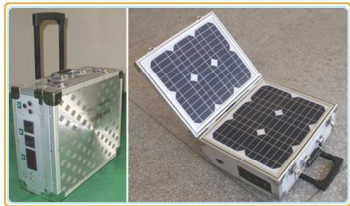
INNOVATION OF AUTOMATIC

太陽能板：5.4V/20W  
 功 率：8-10W  
 电 池：磷酸鐵鋰電池  
 電池容量：3.2V/20AH  
 包裝尺寸：59\*37\*29CM  
 重 量：11Kg



《《 太陽能發電系統

| 型 号        | 太陽能板 | 鉛酸電池    | 輸出電壓        | 功 率     | 控制器 | 重 量  | 包裝後尺寸         |
|------------|------|---------|-------------|---------|-----|------|---------------|
| LXYD-300A  | 20WP | 12V20AH | DC12+AC220V | AC300W  | 5A  | 15kg | 510*480*240mm |
| LXYD-300C  | 40WP | 12V40AH | DC12+AC220V | AC300W  | 5A  | 25kg | 510*480*240mm |
| LXYD-500C  | 40WP | 12V40AH | DC12+AC220V | AC500W  | 5A  | 25kg | 510*480*240mm |
| LXYD-1000D | 40WP | 12V40AH | DC12+AC220V | AC1000W | 5A  | 25kg | 510*480*240mm |
| LXYD-10A   | 10WP | 6V12AH  | DC6V        | DC10W   | 2A  | 4kg  | 290*250*210mm |





LX-SCL系列



| 品番         | LED 数量 (pcs)                  | 消費電力 (W) | 電圧(V)   | ルーメン (lm) | 寸法(mm)    | 口金                 | 色温度         | PF/CRI           |
|------------|-------------------------------|----------|---------|-----------|-----------|--------------------|-------------|------------------|
| LX-SCL-27W | 81pcs<br>Epistar<br>5630 SMD  | 27W      | 85-265V | 2680lm    | 93x196mm  | E26/E27<br>E39/E40 | 2700k-7500k | PF>0.9<br>CRI>80 |
| LX-SCL-36W | 108pcs<br>Epistar<br>5630 SMD | 36W      | 85-265V | 3560lm    | 93x221mm  | E26/E27<br>E39/E40 | 2700k-7500k | PF>0.9<br>CRI>80 |
| LX-SCL-45W | 135pcs<br>Epistar<br>5630 SMD | 45W      | 85-265V | 4450lm    | 93x246mm  | E26/E27<br>E39/E40 | 2700k-7500k | PF>0.9<br>CRI>80 |
| LX-SCL-54W | 162pcs<br>Epistar<br>5630 SMD | 54W      | 85-265V | 5330lm    | 93x271mm  | E26/E27<br>E39/E40 | 2700k-7500k | PF>0.9<br>CRI>80 |
| LX-SCL-80W | 240pcs<br>Epistar<br>5630 SMD | 80W      | 85-265V | 7850lm    | 120x314mm | E26/E27<br>E39/E40 | 2700k-7500k | PF>0.9<br>CRI>80 |



LX-TCL系列



| 品番         | LED 数量 (pcs)                  | 消費電力 (W) | 電圧(V)   | ルーメン (lm) | 寸法(mm)    | 口金                 | 色温度         | PF/CRI           |
|------------|-------------------------------|----------|---------|-----------|-----------|--------------------|-------------|------------------|
| LX-TCL-20W | 128pcs<br>Epistar<br>2835 SMD | 20W      | 85-265V | 2010lm    | 93x185mm  | E26/E27<br>E39/E40 | 2700k-7500k | PF>0.9<br>CRI>80 |
| LX-TCL-30W | 168pcs<br>Epistar<br>2835 SMD | 30W      | 85-265V | 2990lm    | 93x215mm  | E26/E27<br>E39/E40 | 2700k-7500k | PF>0.9<br>CRI>80 |
| LX-TCL-40W | 210pcs<br>Epistar<br>2835 SMD | 40W      | 85-265V | 3980lm    | 93x257mm  | E26/E27<br>E39/E40 | 2700k-7500k | PF>0.9<br>CRI>80 |
| LX-TCL-60W | 294pcs<br>Epistar<br>2835 SMD | 60W      | 85-265V | 5950lm    | 93x277mm  | E26/E27<br>E39/E40 | 2700k-7500k | PF>0.9<br>CRI>80 |
| LX-TCL-80W | 432pcs<br>Epistar<br>2835 SMD | 80W      | 85-265V | 7860lm    | 120x280mm | E26/E27<br>E39/E40 | 2700k-7500k | PF>0.9<br>CRI>80 |





LX-XCL系列



| 品番         | LED数量<br>(pcs)                | 消費電力<br>(W) | 電圧(V)   | ルーメン<br>(lm) | サイズ (mm)   | 口金                   | 色温度         | PF/CRI           |
|------------|-------------------------------|-------------|---------|--------------|------------|----------------------|-------------|------------------|
| LX-XCL-5W  | 54pcs<br>Epistar<br>3014 SMD  | 5W          | 85-265V | 450lm        | 48x118.5mm | E27/E26<br>E17/GX10Q | 2700k-6500k | PF>0.9<br>CRI>80 |
| LX-XCL-7W  | 72pcs<br>Epistar<br>3014 SMD  | 7W          | 85-265V | 650lm        | 48x131.5mm | E27/E26<br>E17/GX10Q | 2700k-6500k | PF>0.9<br>CRI>80 |
| LX-XCL-10W | 96pcs<br>Epistar<br>3014 SMD  | 10W         | 85-265V | 920lm        | 60x157.5mm | E27/E26<br>E17/GX10Q | 2700k-6500k | PF>0.9<br>CRI>80 |
| LX-XCL-12W | 120pcs<br>Epistar<br>3014 SMD | 12W         | 85-265V | 1100lm       | 60x174.5mm | E27/E26<br>E17/GX10Q | 2700k-6500k | PF>0.9<br>CRI>80 |



LX-CPT系列



| 品番             | パワー<br>(W) | 全光束    | 電圧 (V)               | 口金                    | サイズ<br>(mm) | SMD数<br>(pcs) | 色温度        | PF/CRI           |
|----------------|------------|--------|----------------------|-----------------------|-------------|---------------|------------|------------------|
| LX-CPT-225-電球色 | 8W         | 720lm  | 100V-240V<br>50/60Hz | GX10Q<br>GY10Q / 2G11 | 45*225mm    | 40pcs         | 3000-3500K | PF>0.9<br>CRI>80 |
| LX-CPT-225-昼光色 | 8W         | 800lm  | 100V-240V<br>50/60Hz | GX10Q<br>GY10Q / 2G11 | 45*225mm    | 40pcs         | 6000-6500K | PF>0.9<br>CRI>80 |
| LX-CPT-320-電球色 | 11W        | 1000lm | 100V-240V<br>50/60Hz | GX10Q<br>GY10Q / 2G11 | 45*320mm    | 56pcs         | 3000-3500K | PF>0.9<br>CRI>80 |
| LX-CPT-320-昼光色 | 11W        | 1100lm | 100V-240V<br>50/60Hz | GX10Q<br>GY10Q / 2G11 | 45*320mm    | 56pcs         | 6000-6500K | PF>0.9<br>CRI>80 |
| LX-CPT-410-電球色 | 16W        | 1400lm | 100V-240V<br>50/60Hz | GX10Q<br>GY10Q / 2G11 | 45*410mm    | 84pcs         | 3000-3500K | PF>0.9<br>CRI>80 |
| LX-CPT-410-昼光色 | 16W        | 1600lm | 100V-240V<br>50/60Hz | GX10Q<br>GY10Q / 2G11 | 45*410mm    | 84pcs         | 6000-6500K | PF>0.9<br>CRI>80 |
| LX-CPT-535-電球色 | 23W        | 2100lm | 100V-240V<br>50/60Hz | GX10Q<br>GY10Q / 2G11 | 45*535mm    | 144pcs        | 3000-3500K | PF>0.9<br>CRI>80 |
| LX-CPT-535-昼光色 | 23W        | 2300lm | 100V-240V<br>50/60Hz | GX10Q<br>GY10Q / 2G11 | 45*535mm    | 144pcs        | 6000-6500K | PF>0.9<br>CRI>80 |



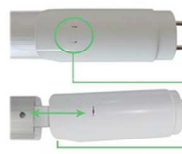
LX-NTL-T8系列



| 品番            | 消費電力 (W) | 全光速    | 電圧(V)   | サイズ(mm)   | SMD 数量 (pcs)            | 色温度         | PF/CRI           |
|---------------|----------|--------|---------|-----------|-------------------------|-------------|------------------|
| LX-NTL-T8-9W  | 9W       | 850lm  | 85-265V | 26x590mm  | 48pcs Epistar 2835 SMD  | 2700k-7500k | PF>0.9<br>CRI>80 |
| LX-NTL-T8-18W | 18W      | 1800lm | 85-265V | 26x1198mm | 96pcs Epistar 2835 SMD  | 2700k-7500k | PF>0.9<br>CRI>80 |
| LX-NTL-T8-22W | 22W      | 2100lm | 85-265V | 26x1498mm | 132pcs Epistar 2835 SMD | 2700k-7500k | PF>0.9<br>CRI>80 |
| LX-NTL-T8-36W | 36W      | 3600lm | 85-265V | 26x2367mm | 192pcs Epistar 2835 SMD | 2700k-7500k | PF>0.9<br>CRI>80 |



LX-T8系列

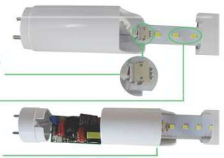


Once the driver doesn't work, it's easy to replace it by yourself  
Snap joint ensures fixity.  
Push case into end-cap

SMD 2835 Epistar

Male & Female Connectors

Instructure



| 品番                 | 消費電力 (W) | 全光速    | 電圧(V)    | サイズ (mm)  | SMD 数量 (pcs)           | 色温度         | PF/CRI           |
|--------------------|----------|--------|----------|-----------|------------------------|-------------|------------------|
| LX-T8-48SMD-600mm  | 10W      | 1000lm | 100-240V | 26x580mm  | 48pcs Epistar 2835 SMD | 2700k-7500k | PF>0.9<br>CRI>80 |
| LX-T8-96SMD-1200mm | 18W      | 2000lm | 100-240V | 26x1198mm | 96pcs Epistar 2835 SMD | 2700k-7500k | PF>0.9<br>CRI>80 |



LX-T9系列



| 品番           | LED数量 (pcs)         | 消費電力 (W) | 電圧(V)   | ルーメン (lm) | 重量 (g)<br>サイズ (mm) | 口金   | 色温度        | チップ     |
|--------------|---------------------|----------|---------|-----------|--------------------|------|------------|---------|
| LX-T9C11W-01 | 56 pcs<br>5630 SMD  | 11W      | 90-260V | 950lm     | 230 g              | G10q | 昼光色<br>電球色 | Epista  |
|              |                     |          |         |           | φ205mm*29mm        |      |            | Samsung |
| LX-T9C13W-01 | 60 pcs<br>5630 SMD  | 13W      | 90-260V | 1150lm    | 250 g              | G10q | 昼光色<br>電球色 | Epista  |
|              |                     |          |         |           | φ225mm*29mm        |      |            | Samsung |
| LX-T9C17W-01 | 72 pcs<br>5630 SMD  | 17W      | 90-260V | 1450lm    | 350 g              | G10q | 昼光色<br>電球色 | Epista  |
|              |                     |          |         |           | φ300mm*29mm        |      |            | Samsung |
| LX-T9C21W-01 | 112 pcs<br>5630 SMD | 21W      | 90-260V | 1900lm    | 420 g              | G10q | 昼光色<br>電球色 | Epista  |
|              |                     |          |         |           | φ375mm*29mm        |      |            | Samsung |



| 品番              | LED数量  | 電圧(V)   | ルーメン (lm) | 口金              | PF/CRI        | サイズ(mm)   |
|-----------------|--------|---------|-----------|-----------------|---------------|-----------|
| LX-CB-3W        | 3x1W   | 85-265V | 280lm     | E26/E27/ B22    | PF>0.5,CRI>75 | 50x100mm  |
| LX-CB-5W        | 5x1W   | 85-265V | 460lm     | E26/E27/ B22    | PF>0.5,CRI>75 | 60x153mm  |
| LX-CB-7W        | 7x1W   | 85-265V | 650lm     | E26/E27/ B22    | PF>0.5,CRI>75 | 63x137mm  |
| LX-CB-9W        | 9x1W   | 85-265V | 850lm     | E26/E27/ B22    | PF>0.9,CRI>75 | 72x135mm  |
| LX-CB-PAR30-9W  | 9x1W   | 85-265V | 850lm     | E26/E27/ B22    | PF>0.9,CRI>75 | 95x118mm  |
| LX-CB-12W       | 12x1W  | 85-265V | 1150lm    | E26/E27/ B22    | PF>0.9,CRI>75 | 100x148mm |
| LX-CB-15W       | 15x1W  | 85-265V | 1420lm    | E26/E27/ B22    | PF>0.5,CRI>75 | 100x148mm |
| LX-CB-PAR38-15W | 15x1W  | 85-265V | 1420lm    | E26/E27/ B22    | PF>0.9,CRI>75 | 118x152mm |
| LX-CB-27W       | 27x1W  | 85-265V | 2550lm    | E26/E27/E39/E40 | PF>0.9,CRI>75 | 130x194mm |
| LX-CB-36W       | 36x1W  | 85-265V | 3400lm    | E39,E40         | PF>0.9,CRI>75 | 173x250mm |
| LX-CB-50W       | 50x1W  | 85-265V | 4750lm    | E39,E40         | PF>0.9,CRI>75 | 173x250mm |
| LX-CB-60W       | 60x1W  | 85-265V | 5600lm    | E39,E40         | PF>0.9,CRI>75 | 204x278mm |
| LX-CB-80W       | 80x1W  | 85-265V | 7000lm    | E39,E40         | PF>0.5,CRI>75 | 204x278mm |
| LX-CB-01-120W   | 120x1W | 85-265V | 10500lm   | E39,E40         | PF>0.9,CRI>75 | 250x336mm |
| LX-CB-02-120W   | 120x1W | 85-265V | 10500lm   | E39,E40         | PF>0.9,CRI>75 | 250x272mm |
| LX-CB-240W      | 240x1W | 85-265V | 21500lm   | E39,E40         | PF>0.9,CRI>75 | 350x338mm |



| 品番         | パワー(W) | 口金  | 演色    | サイズ (mm) | 全光束(lm) | 色温度        | 電圧(V)    |
|------------|--------|-----|-------|----------|---------|------------|----------|
| LX-2835-3W | 3W     | E17 | RA>80 | 36x68mm  | 300lm   | 2700-7500K | 100V     |
| LX-LP-5W   | 5W     | E17 | RA>80 | 57x110mm | 500lm   | 2700-7500K | 100/200V |





LX-KK-3x1 系列



LX-KK-7x1 系列



LX-KK-12x1 系列



LX-KK-18x1 系列

| 品 番                              | パワー (W) | 電圧 (V)  | 全光束 (lm) | PF/CRI           | 寸 法 (mm)    | 取り付け穴サイズ (mm) |
|----------------------------------|---------|---------|----------|------------------|-------------|---------------|
| LX-KK-3x1W-Downlight-White       | 3W      | 85-265V | 300lm    | PF>0.5<br>CRI>80 | Φ85x25mm    | 75mm          |
| LX-KK-3x1W-Downlight-Warm White  | 3W      | 85-265V | 280lm    |                  |             |               |
| LX-KK-7x1W-Downlight-White       | 7W      | 85-265V | 700lm    | PF>0.9<br>CRI>80 | Φ110x45mm   | 95-100mm      |
| LX-KK-7x1W-Downlight-Warm White  | 7W      | 85-265V | 660lm    |                  |             |               |
| LX-KK-12x1W-Downlight-White      | 12W     | 85-265V | 1200lm   | PF>0.9<br>CRI>80 | Φ138mmx45mm | 120-125mm     |
| LX-KK-12x1W-Downlight-Warm White | 12W     | 85-265V | 1130lm   |                  |             |               |
| LX-KK-18x1W-Downlight-White      | 18W     | 85-265V | 1800lm   | PF>0.9<br>CRI>80 | Φ160mmx90mm | 140-150mm     |
| LX-KK-18x1W-Downlight-Warm White | 18W     | 85-265V | 1700lm   |                  |             |               |



| 品 番                   | パワー (W) | 電圧 (V)  | 全光束 (lm) | 照射角度                   | 寸 法       | PF/CRI           |
|-----------------------|---------|---------|----------|------------------------|-----------|------------------|
| LX-NTL-5W-White       | 5W      | 85-265V | 450lm    | 8°/15°/30°/45°/60°/90° | 75X100mm  | PF>0.5<br>CRI>80 |
| LX-NTL-5W-Warm White  | 5W      | 85-265V | 450lm    |                        |           |                  |
| LX-NTL-7W-White       | 7W      | 85-265V | 650lm    | 8°/15°/30°/45°/60°/90° | 75X100mm  | PF>0.5<br>CRI>80 |
| LX-NTL-7W-Warm White  | 7W      | 85-265V | 650lm    |                        |           |                  |
| LX-NTL-9W-White       | 9W      | 85-265V | 800lm    | 8°/15°/30°/45°/60°/90° | 100X120mm | PF>0.9<br>CRI>80 |
| LX-NTL-9W-Warm White  | 9W      | 85-265V | 800lm    |                        |           |                  |
| LX-NTL-12W-White      | 12W     | 85-265V | 1100lm   | 8°/15°/30°/45°/60°/90° | 100X120mm | PF>0.9<br>CRI>80 |
| LX-NTL-12W-Warm White | 12W     | 85-265V | 1100lm   |                        |           |                  |
| LX-NTL-15W-White      | 15W     | 85-265V | 1350lm   | 8°/15°/30°/45°/60°/90° | 120X155mm | PF>0.9<br>CRI>80 |
| LX-NTL-15W-Warm White | 15W     | 85-265V | 1350lm   |                        |           |                  |
| LX-NTL-18W-White      | 18W     | 85-265V | 1600lm   | 8°/15°/30°/45°/60°/90° | 120X155mm | PF>0.9<br>CRI>80 |
| LX-NTL-18W-Warm White | 18W     | 85-265V | 1600lm   |                        |           |                  |



長寿命&省電力  
地球に優しい次世代の灯

防水LED電球

OEM対応

IP65

消費電力が少なく**経済的**！

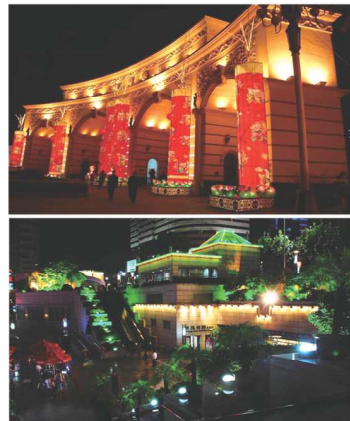
IP65相当の防水性能を提供するLED電球は、ハイビームランプの交換用として、簡単な取り付け作業のみで利用が可能です。

| 品番                            | パワー(W) | LED                        | 電圧(V)   | 全光束(lm)     | 口金      | PF/CRI           | 寸法(mm)  |
|-------------------------------|--------|----------------------------|---------|-------------|---------|------------------|---------|
| LX-WP-PAR38-18W-01-White      | 18W    | 36pcs Epistar 5730 SMD LED | 85-265V | 90-100lm/W  | E26/E27 | PF>0.9<br>CRI>80 | 120x148 |
| LX-WP-PAR38-18W-01-Warm White | 18W    | 36pcs Epistar 5730 SMD LED | 85-265V | 90-100lm/W  | E26/E27 |                  |         |
| LX-WP-PAR38-18W-02-White      | 18W    | 72pcs Samsung5630 SMD LED  | 85-265V | 140-150lm/W | E26/E27 | PF>0.9<br>CRI>80 | 120x148 |
| LX-WP-PAR38-18W-02-Warm White | 18W    | 72pcs Samsung5630 SMD LED  | 85-265V | 140-150lm/W | E26/E27 |                  |         |
| LX-WP-PAR56-30W-White         | 30W    | 60pcs Epistar 5730 SMD LED | 85-265V | 90-100lm/W  | E39/E40 | PF>0.9<br>CRI>80 | 165x230 |
| LX-WP-PAR56-Warm White        | 30W    | 60pcs Epistar 5730 SMD LED | 85-265V | 90-100lm/W  | E39/E40 |                  |         |
| LX-WP-PAR56-40W-01-White      | 40W    | 80pcs Epistar 5730 SMD LED | 85-265V | 90-100lm/W  | E39/E40 | PF>0.9<br>CRI>80 | 165x230 |
| LX-WP-PAR56-40W-01-Warm White | 40W    | 80pcs Epistar 5730 SMD LED | 85-265V | 90-100lm/W  | E39/E40 |                  |         |
| LX-WP-PAR56-40W-02-White      | 40W    | 160pcs Samsung5630 SMD LED | 85-265V | 140-150lm/W | E39/E40 | PF>0.9<br>CRI>80 | 165x230 |
| LX-WP-PAR56-40W-02-Warm White | 40W    | 160pcs Samsung5630 SMD LED | 85-265V | 140-150lm/W | E39/E40 |                  |         |

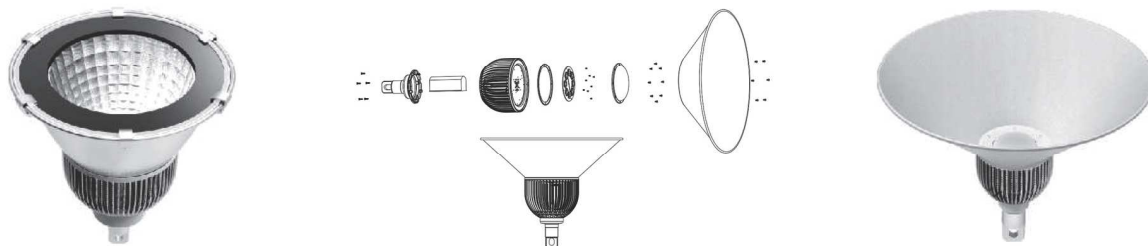




| 品番                       | 消費電力 (W) | 電圧(V)    | ルーメン       | ビーム角度 | PF/CRI           | サイズ (mm)      |
|--------------------------|----------|----------|------------|-------|------------------|---------------|
| LX-NE-10W-White          | 1x10W    | 85V-265V | 90-100lm/W | 120°  | PF>0.9<br>CRI>80 | 179x133x57mm  |
| LX-NE-10W-Warm White     | 1x10W    | 85V-265V | 90-100lm/W | 120°  |                  |               |
| LX-NE-20W-White          | 1x20W    | 85V-265V | 90-100lm/W | 120°  | PF>0.9<br>CRI>80 | 200x166x67mm  |
| LX-NE-20W-Warm White     | 1x20W    | 85V-265V | 90-100lm/W | 120°  |                  |               |
| LX-NE-30W-White          | 1x30W    | 85V-265V | 90-100lm/W | 120°  | PF>0.9<br>CRI>80 | 215x178x67mm  |
| LX-NE-30W-Warm White     | 1x30W    | 85V-265V | 90-100lm/W | 120°  |                  |               |
| LX-NE-50W-White          | 1x50W    | 85V-265V | 90-100lm/W | 120°  | PF>0.9<br>CRI>80 | 253x194x79mm  |
| LX-NE-50W-Warm White     | 1x50W    | 85V-265V | 90-100lm/W | 120°  |                  |               |
| LX-NE-70W-White          | 1x70W    | 85V-265V | 90-100lm/W | 120°  | PF>0.9<br>CRI>80 | 280x250x158mm |
| LX-NE-70W-Warm White     | 1x70W    | 85V-265V | 90-100lm/W | 120°  |                  |               |
| LX-NE-80W-White          | 40x2W    | 85V-265V | 90-100lm/W | 120°  | PF>0.9<br>CRI>80 | 350x280x158mm |
| LX-NE-80W-Warm White     | 40x2W    | 85V-265V | 90-100lm/W | 120°  |                  |               |
| LX-NE-100W-01-White      | 1x100W   | 85V-265V | 90-100lm/W | 120°  | PF>0.9<br>CRI>80 | 330x250x158mm |
| LX-NE-100W-01-Warm White | 1x100W   | 85V-265V | 90-100lm/W | 120°  |                  |               |
| LX-NE-100W-02-White      | 40x2.5W  | 85V-265V | 90-100lm/W | 120°  | PF>0.9<br>CRI>80 | 350x280x158mm |
| LX-NE-100W-02-Warm White | 40x2.5W  | 85V-265V | 90-100lm/W | 120°  |                  |               |
| LX-NE-120W-White         | 2x60W    | 85V-265V | 90-100lm/W | 120°  | PF>0.9<br>CRI>80 | 350x280x158mm |
| LX-NE-120W-Warm White    | 2x60W    | 85V-265V | 90-100lm/W | 120°  |                  |               |
| LX-NE-150W-White         | 2x70W    | 85V-265V | 90-100lm/W | 120°  | PF>0.9<br>CRI>80 | 397x310x158mm |
| LX-NE-150W-Warm White    | 2x70W    | 85V-265V | 90-100lm/W | 120°  |                  |               |
| LX-NE-200W-White         | 4x50W    | 85V-265V | 90-100lm/W | 120°  | PF>0.9<br>CRI>80 | 422x340x158mm |
| LX-NE-200W-Warm White    | 4x50W    | 85V-265V | 90-100lm/W | 120°  |                  |               |







| 品 番                        | 消費電力 (W) | 電圧(V)    | ルーメン       | ビーム 角度 | PF/CRI           | サイズ (mm)  |
|----------------------------|----------|----------|------------|--------|------------------|-----------|
| LX-NB-50W-100°-White       | 1x50W    | 85V-265V | 90-100lm/W | 100°   | PF>0.9<br>CRI>75 | 350x286mm |
| LX-NB-50W-100°-Warm White  | 1x50W    | 85V-265V | 90-100lm/W |        |                  |           |
| LX-NB-80W-100°-White       | 1x80W    | 85V-265V | 90-100lm/W | 100°   | PF>0.9<br>CRI>75 | 457x347mm |
| LX-NB-80W-100°-Warm White  | 1x80W    | 85V-265V | 90-100lm/W |        |                  |           |
| LX-NB-80W-60°-White        | 1x80W    | 85V-265V | 90-100lm/W | 60°    | PF>0.9<br>CRI>75 | 457x347mm |
| LX-NB-80W-60°-Warm White   | 1x80W    | 85V-265V | 90-100lm/W |        |                  |           |
| LX-NB-100W-100°-White      | 1x100W   | 85V-265V | 90-100lm/W | 100°   | PF>0.9<br>CRI>75 | 532x382mm |
| LX-NB-100W-100°-Warm White | 1x100W   | 85V-265V | 90-100lm/W |        |                  |           |
| LX-NB-100W-60°-White       | 1x100W   | 85V-265V | 90-100lm/W | 60°    | PF>0.9<br>CRI>75 | 532x382mm |
| LX-NB-100W-60°-Warm White  | 1x100W   | 85V-265V | 90-100lm/W |        |                  |           |
| LX-NB-150W-100°-White      | 1x150W   | 85V-265V | 90-100lm/W | 100°   | PF>0.9<br>CRI>75 | 580x428mm |
| LX-NB-150W-100°-Warm White | 1x150W   | 85V-265V | 90-100lm/W |        |                  |           |
| LX-NB-150W-60°-White       | 1x150W   | 85V-265V | 90-100lm/W | 60°    | PF>0.9<br>CRI>75 | 580x428mm |
| LX-NB-150W-60°-Warm White  | 1x150W   | 85V-265V | 90-100lm/W |        |                  |           |





LX-HE系列

| 品 番                   | 消費電力 (W) | 電 圧(V)   | ルーメン       | ビーム 角度 | PF/CRI           | サイズ(mm)       |
|-----------------------|----------|----------|------------|--------|------------------|---------------|
| LX-HE-100W-White      | 1x100W   | 85V-265V | 90-100lm/W | 60°    | PF>0.9<br>CRI>80 | 460x375x375mm |
| LX-HE-100W-Warm White | 1x100W   | 85V-265V | 90-100lm/W | 60°    |                  |               |
| LX-HE-120W-White      | 1x120W   | 85V-265V | 90-100lm/W | 60°    | PF>0.9<br>CRI>80 | 460x375x375mm |
| LX-HE-120W-Warm White | 1x120W   | 85V-265V | 90-100lm/W | 60°    |                  |               |
| LX-HE-150W-White      | 1x150W   | 85V-265V | 90-100lm/W | 60°    | PF>0.9<br>CRI>80 | 460x375x375mm |
| LX-HE-150W-Warm White | 1x150W   | 85V-265V | 90-100lm/W | 60°    |                  |               |
| LX-HE-200W-White      | 2x100W   | 85V-265V | 90-100lm/W | 60°    | PF>0.9<br>CRI>80 | 460x375x375mm |
| LX-HE-200W-Warm White | 2x100W   | 85V-265V | 90-100lm/W | 60°    |                  |               |
| LX-HE-300W-White      | 2x150W   | 85V-265V | 90-100lm/W | 60°    | PF>0.9<br>CRI>80 | 460x375x375mm |
| LX-HE-300W-Warm White | 2x150W   | 85V-265V | 90-100lm/W | 60°    |                  |               |
| LX-HE-400W-White      | 2x200W   | 85V-265V | 90-100lm/W | 60°    | PF>0.9<br>CRI>80 | 480x375x375mm |
| LX-HE-400W-Warm White | 2x200W   | 85V-265V | 90-100lm/W | 60°    |                  |               |
| LX-HE-500W-White      | 2x250W   | 85V-265V | 90-100lm/W | 60°    | PF>0.9<br>CRI>80 | 500x375x375mm |
| LX-HE-500W-Warm White | 2x250W   | 85V-265V | 90-100lm/W | 60°    |                  |               |
| LX-HE-600W-White      | 2x300W   | 85V-265V | 90-100lm/W | 60°    | PF>0.9<br>CRI>80 | 500x375x375mm |
| LX-HE-600W-Warm White | 2x300W   | 85V-265V | 90-100lm/W | 60°    |                  |               |

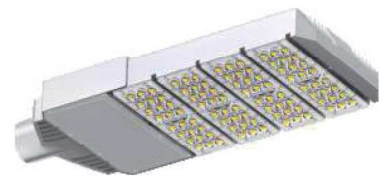




LX-NSL-60W



LX-NSL-90W



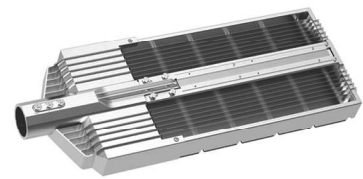
LX-NSL-120W



LX-NSL-150W



LX-NSL-180W



| 品番                        | LED数量 | 電圧(V)    | ルーメン       | PF/CRI           | サイズ (mm)      |
|---------------------------|-------|----------|------------|------------------|---------------|
| LX-NSL-60W-White          | 48    | 85V-265V | 90-100lm/W | PF>0.9<br>CRI>75 | 489x315x204mm |
| LX-NSL-60W-Warm White     | 48    | 85V-265V | 90-100lm/W |                  |               |
| LX-NSL-80W-White          | 48    | 85V-265V | 90-100lm/W | PF>0.9<br>CRI>75 | 489x315x204mm |
| LX-NSL-80W-Warm White     | 48    | 85V-265V | 90-100lm/W |                  |               |
| LX-NSL-90W-White          | 72    | 85V-265V | 90-100lm/W | PF>0.9<br>CRI>75 | 580x315x204mm |
| LX-NSL-90W-Warm White     | 72    | 85V-265V | 90-100lm/W |                  |               |
| LX-NSL-120W-01-White      | 72    | 85V-265V | 90-100lm/W | PF>0.9<br>CRI>75 | 580x315x204mm |
| LX-NSL-120W-01-Warm White | 72    | 85V-265V | 90-100lm/W |                  |               |
| LX-NSL-120W-02-White      | 96    | 85V-265V | 90-100lm/W | PF>0.9<br>CRI>75 | 617x315x204mm |
| LX-NSL-120W-02-Warm White | 96    | 85V-265V | 90-100lm/W |                  |               |
| LX-NSL-160W-White         | 96    | 85V-265V | 90-100lm/W | PF>0.9<br>CRI>75 | 617x315x204mm |
| LX-NSL-160W-Warm White    | 96    | 85V-265V | 90-100lm/W |                  |               |
| LX-NSL-150W-White         | 120   | 85V-265V | 90-100lm/W | PF>0.9<br>CRI>75 | 762x315x204mm |
| LX-NSL-150W-Warm White    | 120   | 85V-265V | 90-100lm/W |                  |               |
| LX-NSL-200W-White         | 120   | 85V-265V | 90-100lm/W | PF>0.9<br>CRI>75 | 762x315x204mm |
| LX-NSL-200W-Warm White    | 120   | 85V-265V | 90-100lm/W |                  |               |
| LX-NSL-180W-White         | 144   | 85V-265V | 90-100lm/W | PF>0.9<br>CRI>75 | 853x315x204mm |
| LX-NSL-180W-Warm White    | 144   | 85V-265V | 90-100lm/W |                  |               |
| LX-NSL-240W-White         | 144   | 85V-265V | 90-100lm/W | PF>0.9<br>CRI>75 | 853x315x204mm |
| LX-NSL-240W-Warm White    | 144   | 85V-265V | 90-100lm/W |                  |               |





LX-NEL-60W



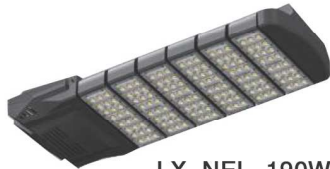
LX-NEL-90W



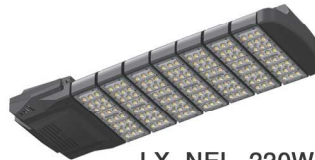
LX-NEL-120W



LX-NEL-150W



LX-NEL-190W



LX-NEL-220W



| 品番                     | LED数量 | 電圧(V)    | ルーメン       | PF/CRI           | サイズ (mm)      |
|------------------------|-------|----------|------------|------------------|---------------|
| LX-NEL-60W-White       | 48    | 85V-265V | 90-100lm/W | PF>0.9<br>CRI>75 | 489x315x204mm |
| LX-NEL-60W-Warm White  | 48    | 85V-265V | 90-100lm/W |                  |               |
| LX-NEL-90W-White       | 72    | 85V-265V | 90-100lm/W | PF>0.9<br>CRI>75 | 580x315x204mm |
| LX-NEL-90W-Warm White  | 72    | 85V-265V | 90-100lm/W |                  |               |
| LX-NEL-120W-White      | 96    | 85V-265V | 90-100lm/W | PF>0.9<br>CRI>75 | 617x315x204mm |
| LX-NEL-120W-Warm White | 96    | 85V-265V | 90-100lm/W |                  |               |
| LX-NEL-150W-White      | 120   | 85V-265V | 90-100lm/W | PF>0.9<br>CRI>75 | 762x315x204mm |
| LX-NEL-150W-Warm White | 120   | 85V-265V | 90-100lm/W |                  |               |
| LX-NEL-190W-White      | 144   | 85V-265V | 90-100lm/W | PF>0.9<br>CRI>75 | 853x315x204mm |
| LX-NEL-190W-Warm White | 144   | 85V-265V | 90-100lm/W |                  |               |
| LX-NEL-220W-White      | 168   | 85V-265V | 90-100lm/W | PF>0.9<br>CRI>75 | 944x315x204mm |
| LX-NEL-220W-Warm White | 168   | 85V-265V | 90-100lm/W |                  |               |



礦物能源遠紅外加熱器

Technology of the product

I. Mineral Energy Pyrogen

Light sourced pyrogen is pyrogen that applies natural chemistry reaction of conductivity high mol-ecule light particle and tunneling current. With pyrogen that was applied with technology of self control resistance, when temperature goes higher than certain temperature, according to resistance, power and overload are prevented by self control. It improved safety and energy saving.

II. Heat Absorption & Radiation Mineral Energy Panel

Light sourced panel is high effective technology that absorbs heat energy of light sourced pyrogen and radiates so that the panel can amplify heat energy from light sourced pyrogen. With environmental friendly mineral material bioware and panel design, it radiates useful wave for human body and amplifies rate of heat radiation so that it can transfer heat energy further with non-air flow method.

III. Mineral Energy Material & SOL-Gel Process based HCP Coating

- function of environmental friendly(eco) porosity mineral material

decomposing poisoned gas and harmful heavy metal, antibacterial function and cytostatic action(virus, bacteria and fungal infection), releasing far-infrared radiation and anion.

- Functional mineral coating by HCP(SOL-GEL Process)

Low temperature composing by SOL-GEL Process and with radiant panel coating by low temperature harden method from 180M dry bioware was created.

Effectiveness and advantage theproduct

- It saves heating bills tremendously (30~50% saving)
- No electromagnetic wave. It warms up body like sunshine from fall.
- Extend of microvessle, acceleration of blood circulation and excreting waste matter from the body
- It releases far-infrared radiation in 40℃ about 93% which is beneficial to the body.
- It has cytostatic action of virus, bacteria and fungus.
- It releases anion much which gives freshness.
- It is very good at eliminating humidity by the function of far-infrared radiation.
- With radiation heating, it does not make fine dust so that it prevents asthma and bronchitis.
- It is refreshing because it does not create harmful gas like CO2, nitrogen oxides, noise and light.
- Usage of special material to prevent danger of fire.(it does not catch on fire in 350℃)
- Cooxidation does not happen while it is on. It is not necessary to ventilate even if it is on for long time.
- With simple design and simplified parts, it has almost no defect so that there is not much need of maintenance fee.
- Heating area can be calculated by width, length and height. According to insulation, there can be difference in heating area.



| 型号        | 产品图片 | 供暖面积(m²) |
|-----------|------|----------|
| LX-G1800A |      | 09~16    |
| LX-N2700A |      | 14~24    |
| LX-N3600A |      | 19~32    |







低功率 (15W、23W、40W、50W交流)  
使用符合国际标准的螺口灯头  
适用于住宅、超市、宾馆及太阳能照明领域  
交流一体化120V、220V、277V、36V；直  
流分体式12V/24V；交流分体式220V

### 金星系列

| 光源名称           | 螺口      |
|----------------|---------|
| LVD-ZWJY-JY-23 | E27     |
| LVD-ZWJY-JY-40 | E27/E40 |
| LVD-ZWJY-JY-50 | E27/E40 |

#### 分体式金星型LVD无极灯技术参数

| 系列   | 型号        | 质保期(年) | 电压 (V)            | 额定光通量(Lm) | 光源规格(mm)                           | 外包装尺寸(mm)        | 系统功率(W)                         |
|------|-----------|--------|-------------------|-----------|------------------------------------|------------------|---------------------------------|
| 金星系列 | LVD-JX23W | 3      | 220/120/277/12/24 | 1500      | 78x62x182                          | 546x233x436(24只) | 24(一体化/分体式)<br>26/28(12/24V分体式) |
| 金星系列 | LVD-JX40W | 3      | 220/120/277/12/24 | 2750      | 115x88x250(E27)<br>115x88x261(E40) | 768x325x622(24只) | 42(一体化/分体式)<br>44/45(12/24V分体式) |
| 金星系列 | LVD-JX50W | 3      | 220/120/277/12/24 | 3350      | 115x88x250(E27)<br>115x88x261(E40) | 768x325x622(24只) | 52(一体化/分体式)                     |

#### 一体化金星型LVD无极灯技术参数

| 型号                  | 系统功率(W) | 电网频率(Hz) | 功率因素 | 输入电压(V) | 输入电流(A) |
|---------------------|---------|----------|------|---------|---------|
| LVD-ZWJY-120V/60-23 | 25      | 50/60    | >0.9 | 120     | 0.37    |
| LVD-ZWJY-120V/60-40 | 42      | 50/60    | >0.9 | 120     | 0.37    |
| LVD-ZWJY-120V/60-50 | 52      | 50/60    | >0.9 | 120     | 0.46    |
| LVD-ZWJY-220V/50-23 | 25      | 50/60    | >0.9 | 220     | 0.21    |
| LVD-ZWJY-220V/50-40 | 42      | 50/60    | >0.9 | 220     | 0.20    |
| LVD-ZWJY-220V/50-50 | 52      | 50/60    | >0.9 | 220     | 0.25    |
| LVD-ZWJY-277V/60-23 | 25      | 50/60    | >0.9 | 277     | 0.09    |
| LVD-ZWJY-277V/60-40 | 42      | 50/60    | >0.9 | 277     | 0.16    |
| LVD-ZWJY-277V/60-50 | 52      | 50/60    | >0.9 | 277     | 0.20    |

### 新星系列

中功率(100W交流)  
使用符合国际标准的螺口灯头  
可替换钠灯、汞灯、金卤灯等所有使用E40螺口的灯具  
交流一体化220V、110-277V



#### 新星型LVD无极灯技术参数

| 系列   | 型号         | 质保期(年) | 电压 (V)      | 额定光通量(Lm) | 光源规格(mm)    | 外包装尺寸(mm)                        | 系统功率(W) |
|------|------------|--------|-------------|-----------|-------------|----------------------------------|---------|
| 新星系列 | LVD-NV100W | 5      | 220/100-277 | 8500      | 395x245x155 | 395x245x155(只)<br>510x500x415(只) | 101     |

#### 基础属性

- 特制梨形结构。
- 整体化的发光设计，空间360°光线发散均匀。
- 可匹配全电压镇流器，可在全球销售。
- 可适用于仓储、投光、泛光等大面积工业场所照明。
- 内置汞齐，环境污染小，绿色环保。
- 自行研制惰性气体配方，光效和功率一致性可以保证。
- 特制铁氧体磁芯，在较宽温度范围内维持磁芯电感量恒定；特有B-H曲线，减小磁滞和磁芯损耗。
- 发光表面积较同等功率光源产品大，使光线柔和，减少眩光。
- 特有磁环抱箍结构，有效防止磁芯漏磁和磁芯功率损耗，同时散热性能绝佳。
- 光效大于85Lm/W。最佳使用情况下，可达到90Lm/W。
- 螺旋型E40灯头可直接替换中等功率金卤灯、节能灯等。
- 特制汞齐配方，适合宽温度范围下的瞬时启动特性和功率稳定特性。
- 采用独特技术，功率启动爬升速度加快，稳定性更佳。



## 土星系列、靈龍系列、電子整流器



適用範圍：

各類圓形、矩形反光器燈具；

廣泛應用於工業、商業、公共設施及太陽能照明領域。

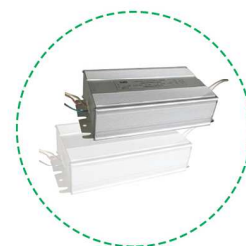
40W、50W、80W、120W、150W、200W、250W、300W  
交流220V、347V、110~277V、直流12V/24V 40W。

### 土星型LVD無極燈技術參數

| 系列   | 型號                     | 質保期(年) | 額定光通量(Lm) | 光源規格(mm)                          | 外包裝尺寸(mm)        | 系統功率(W) |
|------|------------------------|--------|-----------|-----------------------------------|------------------|---------|
| 土星系列 | LVD-TX40W              | 5      | 3050      | 167x152x82                        | 422x214x611(10只) | 45      |
| 土星系列 | LVD-TX50W              | 5      | 3650      | 167x152x82                        | 422x214x611(10只) | 54      |
| 土星系列 | LVD-TX80W              | 5      | 6500      | 227x214x95                        | 550x278x661(10只) | 86      |
| 土星系列 | LVD-TX120W             | 5      | 10000     | 288x274x95                        | 664x335x661(10只) | 128     |
| 土星系列 | LVD-TX150W             | 5      | 12500     | 288x274x95                        | 664x335x661(10只) | 160     |
| 土星系列 | LVD-TX200W             | 5      | 16500     | 334x314x105                       | 744x375x611(10只) | 212     |
| 土星系列 | LVD-TX250W             | 5      | 20500     | 368x348x105                       | 812x409x661(10只) | 250     |
| 土星系列 | LVD-TX300W             | 5      | 25000     | 420x388x114                       | 890x460x719(10只) | 316     |
| 土星系列 | LVD-ZWJYTX2B-120/60-40 | 5      | 3050      | 166x152x181(E27)/166x152x201(E40) | 644x416x506(12只) | 40      |
| 土星系列 | LVD-ZWJYTX2B-220/50-40 | 5      | 3050      | 166x152x181(E27)/166x152x201(E40) | 644x416x506(12只) | 40      |
| 土星系列 | LVD-ZWJYTX2B-277/60-40 | 5      | 3050      | 166x152x181(E27)/166x152x201(E40) | 644x416x506(12只) | 40      |

\*無極燈系列色溫為2700/3500/4000/5000/6500 顯色性指數CRI>80 (Ra) 直流型號(12V/24V)是太陽能照明系統的最佳光源選擇之一

## 電子整流器



### 靈龍型LVD無極燈技術參數

| 系列   | 型號         | 質保期(年) | 額定光通量(Lm) | 光源規格(mm)    | 外包裝尺寸(mm)        | 系統功率(W) |
|------|------------|--------|-----------|-------------|------------------|---------|
| 靈龍系列 | LVD-LL40W  | 5      | 3050      | 179x114x89  | 342x249x609(10只) | 45      |
| 靈龍系列 | LVD-LL50W  | 5      | 3650      | 179x114x89  | 342x249x609(10只) | 54      |
| 靈龍系列 | LVD-LL80W  | 5      | 6500      | 280x140x98  | 382x349x659(10只) | 86      |
| 靈龍系列 | LVD-LL120W | 5      | 10000     | 351x140x98  | 423x378x659(10只) | 128     |
| 靈龍系列 | LVD-LL150W | 5      | 12500     | 351x140x98  | 423x378x659(10只) | 160     |
| 靈龍系列 | LVD-LL200W | 5      | 16500     | 431x148x105 | 501x410x709(10只) | 212     |
| 靈龍系列 | LVD-LL250W | 5      | 20500     | 481x148x105 | 551x410x709(10只) | 260     |
| 靈龍系列 | LVD-LL300W | 5      | 25000     | 542x152x114 | 608x419x714(10只) | 316     |

\*無極燈系列色溫為2700/3500/4000/5000/6500 顯色性指數CRI>80 (Ra) 直流型號(12V/24V)是太陽能照明系統的最佳光源選擇之一

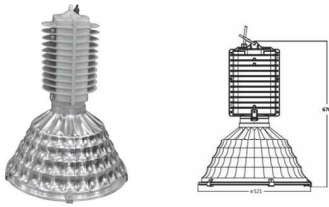
## 高懸燈系列



編號：03-041  
 型號：LVD-GC06006  
 尺寸：φ585xH565  
 包裝尺寸：655x650x670  
 IP等級：IP54  
 重量：7KG  
 包裝方式：整燈包裝

編號：03-042  
 型號：LVD-GC06007  
 尺寸：φ521xH485  
 包裝尺寸：605x605x600  
 IP等級：IP54  
 重量：6KG  
 包裝方式：整燈包裝

## 高悬灯 灵熠飞甲系列



编号：03-031  
型号：LVD-GC05007  
尺寸：φ521xH670  
包装尺寸：609x609x724(整灯包装)

610x610x380(分体包装-灯罩)  
245x245x400(分体包装-电器箱)  
IP等级：IP65  
重量：6.7KG 包装方式：分拆包装

## 高悬灯 飞檐系列

编号：03-028  
型号：LVD-GC03005  
尺寸：φ580xH485

包装尺寸：647x647x567  
IP等级：IP54  
重量：5.7KG 包装方式：整灯包装



## 商用照明灯具系列

### COMMERCIAL LIGHTING



- 纯铝镜面反射器、云光盘，表面氧化处理、灯圈及底板采用冷轧钢板加工，表面静电喷塑。
- 采用优质进口冷轧钢板，灯体成形工艺优良。
- 采光杯采用优质高纯铝，光反射率更高，长期使用不易变色。
- 安装稳定可靠、安全。

## 植物灯系列

### PLANT LAMP SERIES



1. 智能植物种植层架采用嵌入式系统进行自动控制，在充足日照环境中有效利用日光进行植物生长照明，避免现有层架种植系统完全人工补光所带来的电费消耗（同比节电效率提升60%以上）；
2. 在非充足日照环境中，可有效利用自动化操作，实施LVD无极植物灯人工补光，对于阴暗天气、夜间额外补光等提供良好植物补充生长光照；
3. 采用自动化补水系统，实施种植作物的自动化灌溉；
4. 可有选择的嵌入光照度、环境温度、环境湿度、土壤温度、土壤湿度、环境二氧化碳等传感设备；
5. 可选择嵌入式系统完全自动化输入实施光照、水循环等的操作，也可选择远程wifi通信，通过软件界面实施人为设定操作；

## 防爆灯系列

### EXPLOSION-PROOF SERIES

- 外壳铝合金压铸，具有极高机械强度和散热性能。
- 表面高压静电粉尘喷涂，抗腐蚀能力高于5年。
- 灯具采用抛光氧化铝反光器，反光效率高。
- 灯具外露紧固件采用高防腐性能不锈钢螺栓，用户接线可快速开启，维护方便。
- 灯具外形简洁，美观大方，壳体之间采用高性能硅橡胶密封，可靠耐用，具有良好防水防尘性能。



## 投光灯系列

### FLOODLIGHT SERIES

- 高压压铸铝灯壳体及电器箱壳体，将电器与灯管分离，提高大功率产品散热性和独立密封性。
- 无极灯专业设计反光器曲面结构，更加适合无极灯光源发光光型匹配，采用镜面反光器表面处理工艺。
- 独特灯具搭扣设计，保证灯具打开及密封的便利，保证产品高密封等级。

## 街灯系列

### STREET LIGHT SERIES

- 灯体及电器箱由高压压铸制成。
- 高强度，耐高温弧面钢化玻璃，
- 一次成型高纯度氧化铝反射器提供最优化的光分布。
- 静电喷塑表面处理工艺。
- 可选光控开关。



## 隧道灯系列

### TUNNEL LIGHT SERIES

- 灯体由抗冲击一体化高压压铸铝组成，美观耐用。
- 灯具表面静电喷塑处理，耐高温，耐候性能良好。
- 进口镜面铝反射器，反射率高，确保光通量的高输出。
- 灯具采用两侧开启方式，方便安装。
- 高强度玻璃，透光率高，耐冲击。
- 新型硅橡胶密封圈，有效保证硅橡胶不老化的。



龍行天下 幸福萬家

完美品質優質服務

龍幸太陽能是您的首選

經營項目：

太陽能光電產品 太陽能光熱產品

風能發電產品 LED光源 無極燈 節能光源

園林景觀設計 樓體燈飾亮化

# HEILONGJIANG LONG XING

黑龍江龍幸太陽能技術開發有限公司

地址：黑龍江省哈爾濱市道外區紅旗大街805號

電話：+86-0451-8209 0816 / 8209 0817

傳真：+86-0451-8209 0826

網址：[www.lx-solar.com](http://www.lx-solar.com)

郵箱：[longxing@lx-solar.com](mailto:longxing@lx-solar.com)